

1st & 2nd
Euphoniums in B \flat
(Bass Clef)

習志野ウィンド・オーケストラ創立20周年記念委嘱作品
Commissioned by The Narashino Wind Orchestra

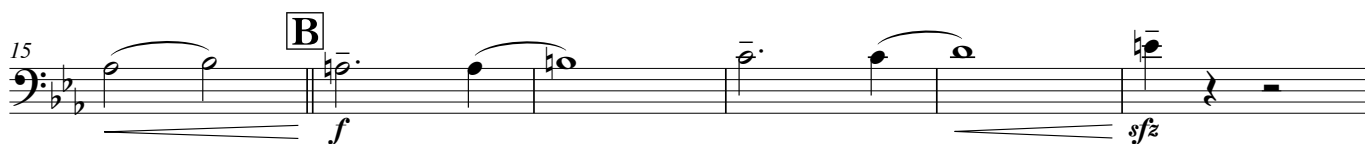
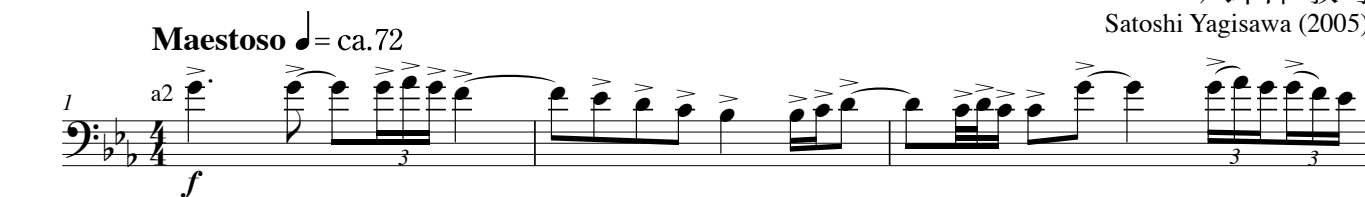
「ナスカ」-地上に描かれた遥かなる銀河

Nazca Lines - The Universe Drawn on the Earth

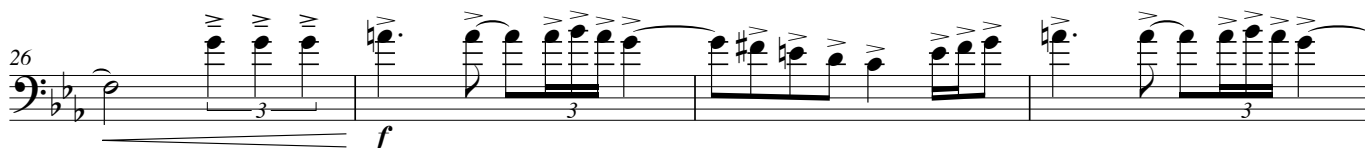
八木澤 教司

Satoshi Yagisawa (2005)

Maestoso $\text{♩} = \text{ca. } 72$



C Grandioso



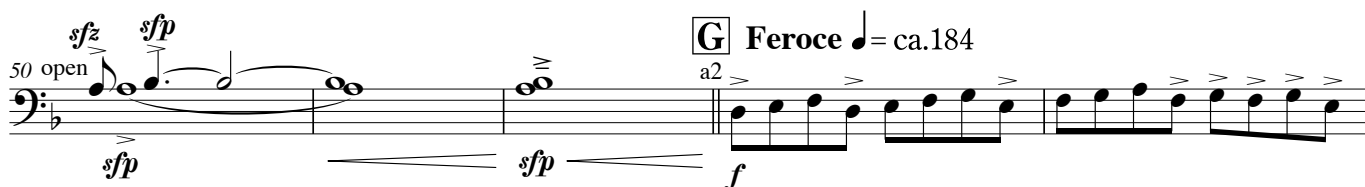
D Serioso $\text{♩} = \text{ca. } 63$



E Elegiaco $\text{♩} = \text{ca. } 72$



F



G Feroce $\text{♩} = \text{ca. } 184$



Nazca Lines - 1st & 2nd Euphoniums in B^b (B.C.)

55 

59 

64 

69 

73 

77 

82 

86 

92 

Nazca Lines - 1st & 2nd Euphoniums in B \flat (B.C.)

97

K Feroce

104

L

113

M Serioso

126

131

mp espress. *poco a poco cresc.*

N

138

144

149 **O**

f *poco a poco cresc.*

154 **P** **Brillante**

ff

159 *ritardando*

sfz

165 **Q** **Espressivo** $\text{♩} = \text{ca. } 72$

f

169 *poco ritard.* **R** **Misterioso a tempo**

185 **S** **Piacevole** $\text{♩} = \text{ca. } 66$ *allargando* **T** **Espressivo** $\text{♩} = \text{ca. } 72$

mf *f*

200

205 *poco a poco stringendo* *allargando* **U** **Brillante a tempo**

ff

210 *a2*

214 *allargando*

ff *sfz*