

# Tuba in B<sup>b</sup>

Commissioned for the 40th Anniversary of Kofu Community Band

## Primavera

~ Beautiful Mountain Winds ~

Satoshi Yagisawa (2008)

1 **Misterioso** ♩ = 54 ca.

10 **A** *f*

15 *mf*

21 *(poco ritardando)* **B Con moto** ♩ = 63 ca. *mf marcato*

26 *poco a poco cresc.*

30 *(allargando)* *(a tempo)* *ff*

36 *allargando* **C Tempo rubato** ♩ = 54 ca. *ffz* *ff* *ffz p* *fff* **D Energico** ♩ = 152 ca. *3* *5*

47 *f* *ffz* *2*

*Tuba in B<sup>b</sup>*

53 Musical score for the bass line of 'The Rose Tree'. The piece is in 3/4 time, key of B-flat major (two flats). The score starts at measure 53. The bass line features a series of eighth notes with upward bowing marks (indicated by a small triangle above the note). The dynamics are marked *ff* (fortissimo) at the beginning and *f* (forte) later. The score includes a repeat sign and a final measure with a 4/4 time signature change.

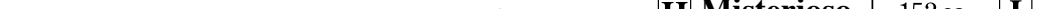
61

*f* **E** *f*

67

Musical score for the bass line of 'The Rose Tree'. The notation is on a single staff with a bass clef. It begins with a whole note G2, followed by a half note F2, and then a triplet of eighth notes E2, D2, and C2. This is followed by a half note B1, a quarter note A1, and a dotted half note G1. The piece concludes with a triplet of eighth notes F#1, E1, and D1, followed by a final whole note C1.

73 F 3 *f* *allargando* G **Grave** ♩ = 120 ca. *ff*

81  **Misterioso** ♩ = 152 ca. **I**

100

*mf* *espress.*

106

106

112 *molto allargando*

*poco a poco cresc.*

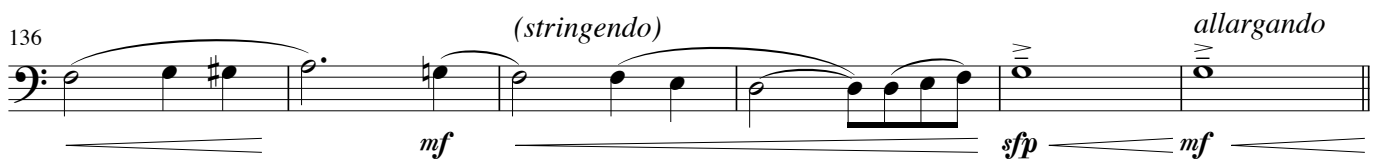
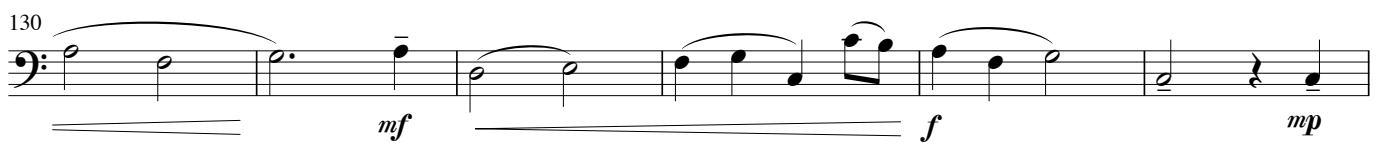
The musical score for measures 112-115 is written in bass clef with a key signature of one flat (B-flat). Measure 112 begins with a half note B-flat, followed by a half note A-flat, and then a half note G. Measure 113 contains a half note F, a half note E, and a half note D. Measure 114 contains a half note C, a half note B-flat, and a half note A-flat. Measure 115 contains a half note G, a half note F, and a half note E. The piece concludes with a double bar line. The tempo marking *molto allargando* is placed above the staff, and the dynamic marking *poco a poco cresc.* is placed below the staff.

Tuba in B<sup>b</sup>

118 **J** *Espressivo* ♩ = 56 ca.



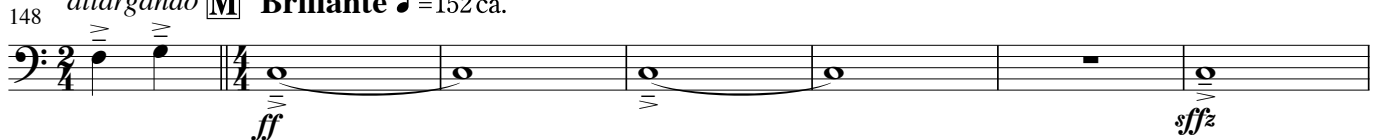
124 *poco ritardando* **K** *Espressivo* ♩ = 56 ca.



142 **L** *Con sentimento a tempo*



148 *molto allargando* **M** *Brillante* ♩ = 152 ca.



155 *molto allargando*

