

1st Trombone in B \flat
(Bass Clef)

吹奏楽のための音詩「輝きの海へ」

A Tone Poem for Wind Orchestra "And Then the Ocean Glow"

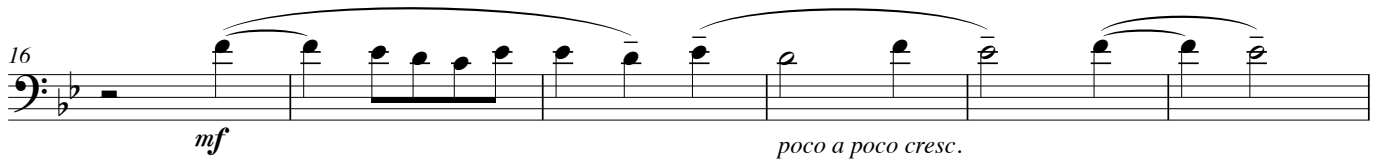
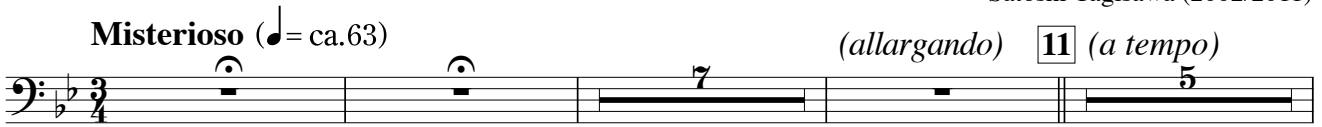
(2011年・中編成対応改作版)

八木澤教司 作曲

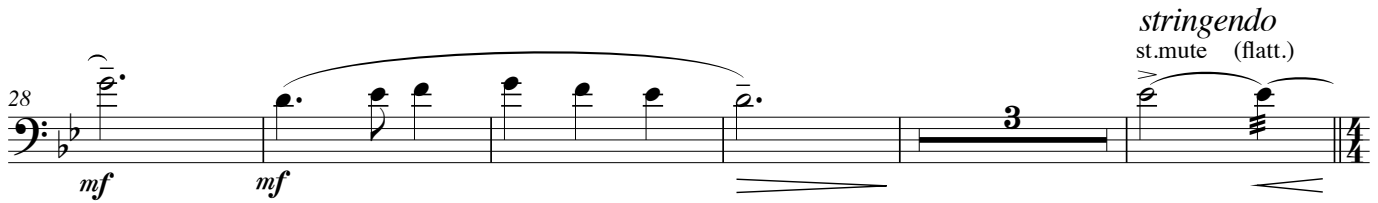
Satoshi Yagisawa (2002/2011)

Misterioso (♩ = ca.63)

(*allargando*) **11** (*a tempo*)



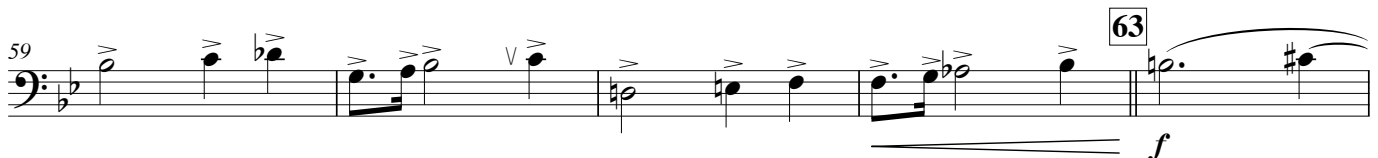
allargando **23** **Espressivo a tempo**



36 **Serioso** (♩ = ca.120)

poco a poco stringendo open

47 **Tempestoso** (♩ = ca.138)



1st Trombone in B \flat (Bass Clef)

64

70

71

76

82

85

88

93

Cue Euph.

play

100

101

105

111 Brillante

110

119 Misterioso (♩ = ca. 63) *ritardando* **133 Canabile a tempo**

mp *mf*

138 *mp* *poco a poco cresc.* *mf* (allargando)

144 Espressivo (a tempo) (allargando) (a tempo) *f*

poco a poco cresc.

150 *ritardando* *a tempo* *allargando* **155 Grandioso a tempo** *mp* *f*

156

162 *molto allarg.* **165 Brillante a tempo** *ff*

168 (ritard.) (a tempo) allargando *ffz p* *ffz*