

# 3rd Trombone in B $\flat$

## 《Fu-Mon》

保 科 洋

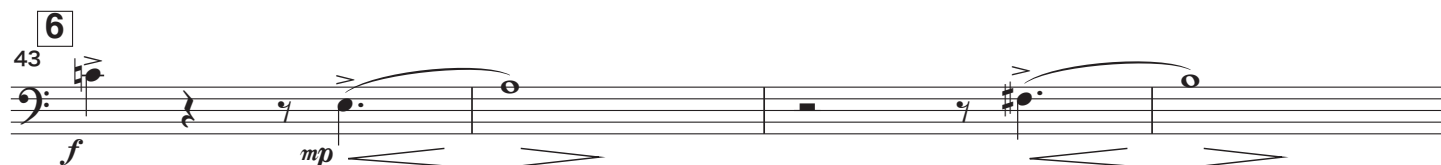
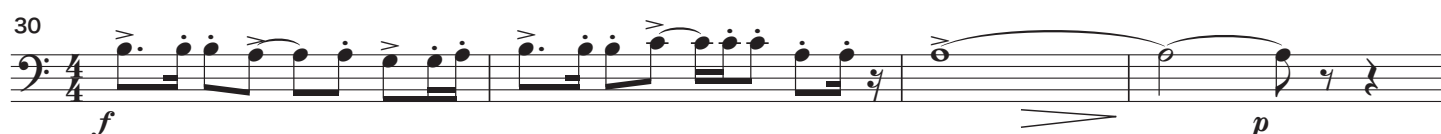
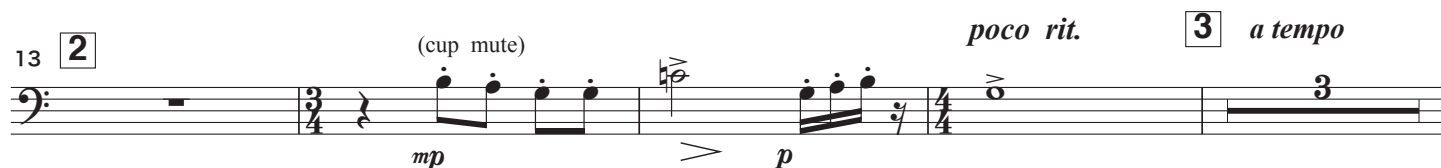
Hiroshi HOSHINA

(B. C.)

Selected for All Japan Band Competition in 1987

Andante  $\text{♩} = 69$

1



3rd Trombone in B $\flat$  (B. C.)

53

58

63

69

75

79

84

88

91

13

*3rd Trombone in B<sup>b</sup> (B. C.)*

98 14 *3rd Trombone in B $\flat$  (B. C.)*

The musical score for the 3rd Trombone in B-flat (B. C.) part, measures 98-103. The key signature has one flat (B-flat). The staff is in bass clef. Measure 98 starts with a piano (p) dynamic and a half note B-flat. Measure 99 has a crescendo hairpin leading to a forte (f) dynamic and a half note B-flat. Measure 100 has a decrescendo hairpin leading to a mezzo-piano (mp) dynamic and a half note B-flat. Measure 101 has a crescendo hairpin leading to a mezzo-forte (mf) dynamic and a half note B-flat. Measure 102 has a decrescendo hairpin leading to a mezzo-piano (mp) dynamic and a half note B-flat. Measure 103 has a crescendo hairpin leading to a mezzo-forte (mf) dynamic and a half note B-flat. The notes are: 98: B-flat, 99: B-flat, 100: B-flat, 101: B-flat, 102: B-flat, 103: B-flat.

102 15

*p* *mp*

16  
107

*ff*

This musical score segment contains measures 107 through 110. It is written on a single bass staff. Measure 107 begins with a forte fortissimo (*ff*) dynamic marking. The notation includes eighth and sixteenth notes, some with accents, and a half note. Measure 108 continues with similar rhythmic patterns. Measure 109 features a half note followed by a quarter rest. Measure 110 concludes with a half note and a quarter rest.

110

The musical score for the bass line of 'The Rose Tree' is written on a single staff. It begins with a whole rest, followed by a half rest. The melody then starts on a low note, moving up stepwise through several notes, including some beamed eighth notes. The piece concludes with a final note and a fermata. The dynamic marking *ff* is placed below the staff.

*Ritard.* *allarg.* 17 *meno mosso*

113

*fff* *p*

118

The musical score for measures 118-121 is written in bass clef with a 2/2 time signature. Measure 118 contains a half note G2 with a 'p' dynamic marking. Measure 119 contains a half note F2 with a 'p' dynamic marking. Measure 120 contains a half note E2 with a 'p' dynamic marking. Measure 121 contains a half note D2 with a 'p' dynamic marking. The piece concludes with a double bar line. The tempo marking 'allarg.' is positioned above the staff, and the dynamic marking 'mf' is positioned below the staff.

*ppp*

*allarg.*

*mf*

123 **18** Vivace

*f*

129 *allarg.* **19** **Maestoso** *allarg.*

*ff*

**20** Vivace

135

*p* *mf*

139

*f*

143

*p* *ff*