

85 *f* *cresc.*

[ No. 3a : Ball-Music ]

91 **6** Walzer *ff marcato*

97

104

111

118

[ No. 7 : Opening Chorus ] **7** *Meno mosso* *rit.* *Allegretto moderato* *pp*

**8** *Allegretto (meno mosso)*

133

139 *ff*

147 *f*

# 2nd Trombone in Bb (B.C.)

## "The Merry Widow" Selections for wind ensemble < Small version >

Franz Lehár  
Arranged by Eiji Suzuki

[ No.1 : Opening Chorus ]

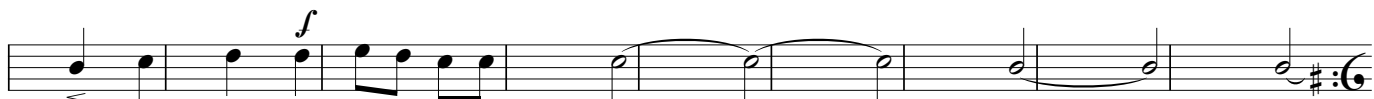
**Prestissimo**



**1**



18



**2**



27

**3 Marcia**



39



47

[ No.3 : Entrance ]

**4 Allegro** (♩=♩)



56



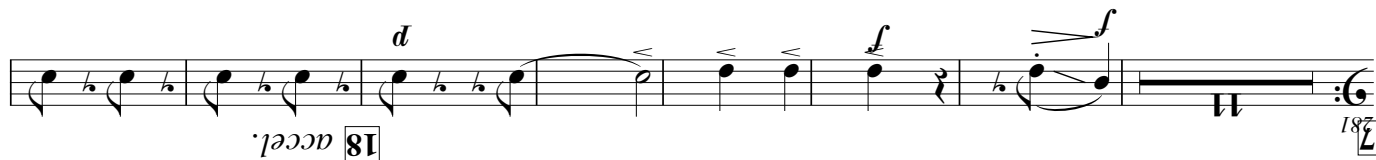
69

*cresc.*



77

**5**



Musical score for No. 9: March ~ Trio + No. 18: Finale. The score is written for a single melodic line in 3/4 time, featuring various musical notations, dynamics, and tempo markings.

The score is divided into several measures, with measure numbers 157, 164, 172, 182, 206, 215, 223, 230, 238, 248, and 256 indicated. The key signature is one sharp (F#).

The score includes the following markings and instructions:

- Measure 157:** *rit.* (ritardando), *Più mosso* (faster), *f* (forte).
- Measure 164:** *f* (forte).
- Measure 172:** *rit.* (ritardando), *pp* (pianissimo), *a tempo* (return to original tempo).
- Measure 182:** *p* (piano), *Meno mosso* (less motion), *16* (measure number).
- Measure 206:** *cresc.* (crescendo), *>* (accent), *13 Broadly* (broadly).
- Measure 215:** *ff* (fortissimo), *mf* (mezzo-forte).
- Measure 223:** *ff* (fortissimo), *fp* (fortissimo-piano), *molto allarg.* (very slowing down), *Meno mosso* (less motion), *mf* (mezzo-forte).
- Measure 230:** *a tempo* (return to original tempo), *(13)* (measure number).
- Measure 238:** *p* (piano), *14 Tempo di Marcia* (March tempo).
- Measure 248:** *f* (forte).
- Measure 256:** *p* (piano), *15* (measure number).