

B \flat Bass Tuba
(Bass Clef)

Suite on Celtic Folk Songs

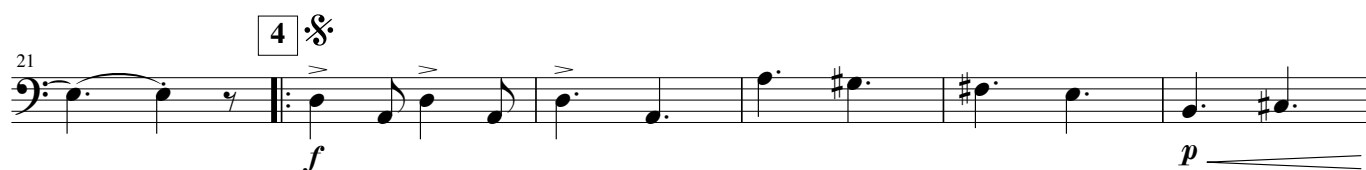
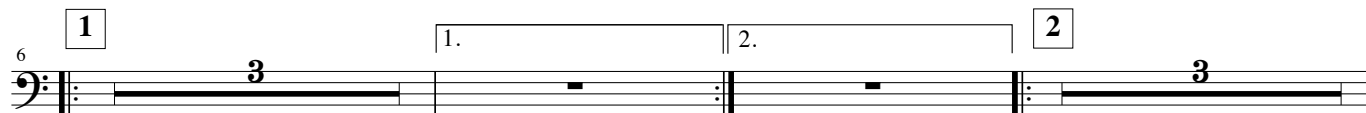
< Large Version >

I: March II: Air III: Reel

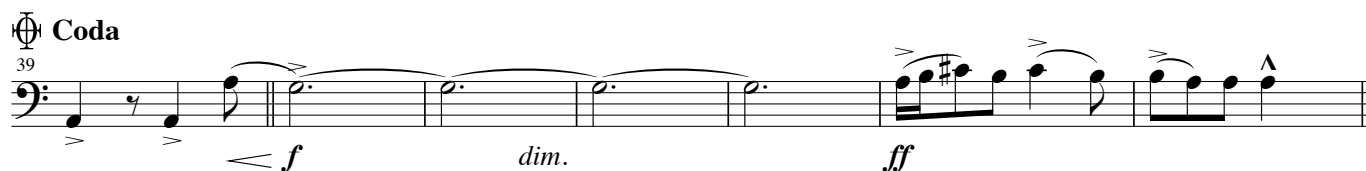
Transcription for Band
by Tomohiro Tatebe, 2001

I: March

March Feroce $\text{♩} = 76 - 82$



D.S. to 4



II: Air

B♭ Tuba (B.C.)

1 Adagio rusticana ♩ $\div 54$

Tranquillo $\div 78$

rall.

St. Bass

pp

 mp

4

 mf mp

rit.

III: Reel

Tempo di Reel $\cdot \div 90-100$ ($\cdot \div 180-200$)

1

p

cresc.

 f

G.P.

L'istesso tempo $\text{♩} = \text{♩}$

1.

2.

5

7

8

9

7

B♭ Tuba (B.C.)

173 1. 2. 10 11 12

mp

192 13 2

poco a poco cresc.

204 14 .S. (D.S. time Repeat) f

f

212 1. 2. 15 to Coda

to Coda

219 16

3

226 17

3

233

3

18 240 D.S.

D.S.

D.S. to 14

D.S. to 14

♩ Coda (♩ = ♩.)

248 8

8

256 stringendo mf f ff sfz

stringendo