

B♭ 2nd Trombone
(Bass Clef)

Die schöne Galathee

Ouverture

Fr. v. Suppé
trans. by A. Isozaki

Allegro spiritoso con brio (♩.=108)

ff

1

ff *ff* *p cresc.*

2

f *cresc.* *ff*

Andante (♩.= 60)

3

4 6 18

Allegretto animato (♩.= 69)

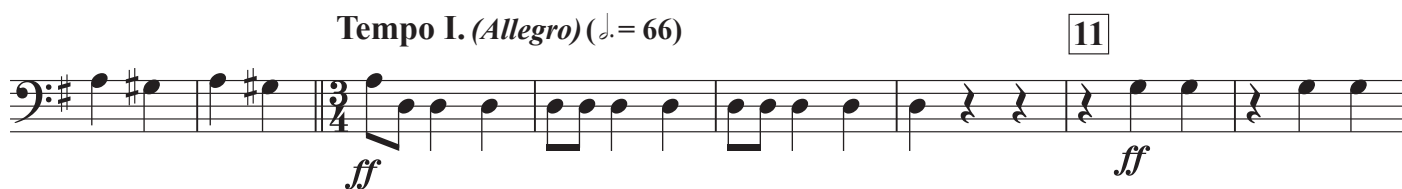
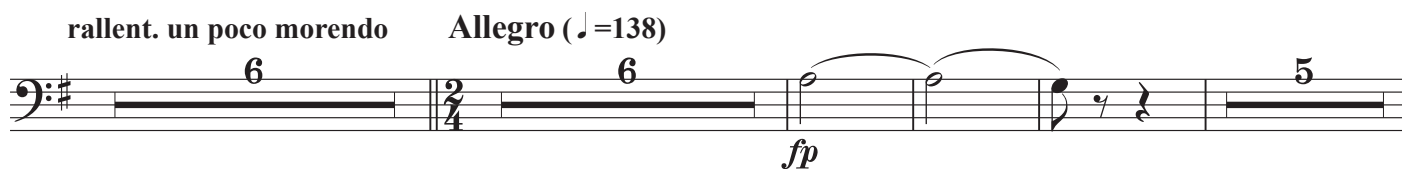
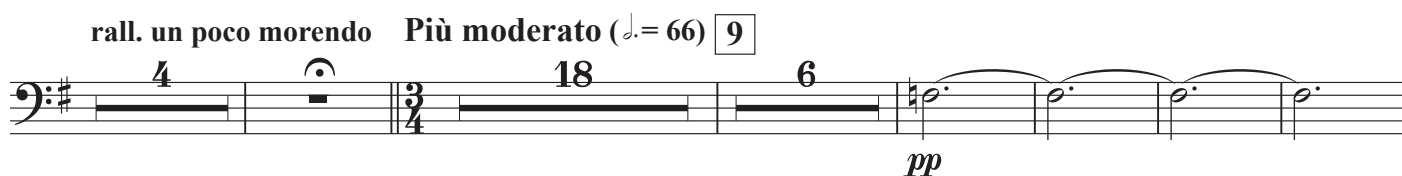
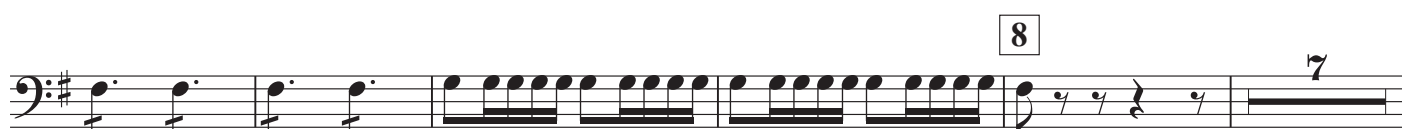
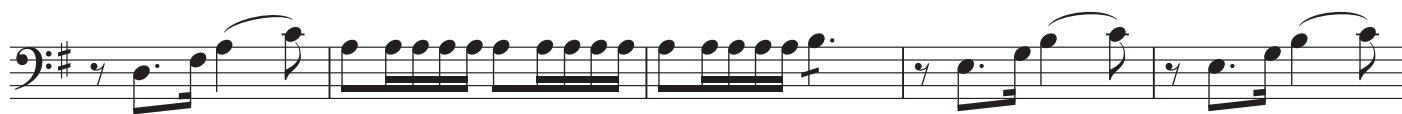
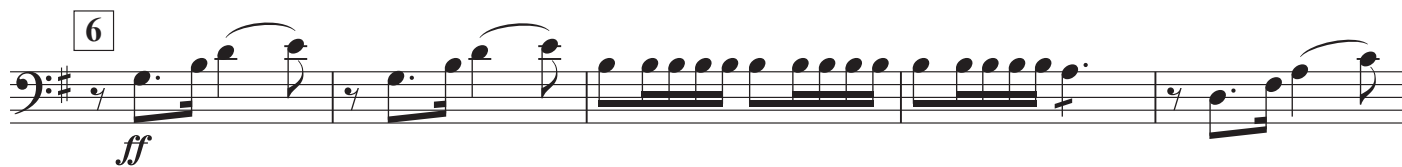
4

12

ff *p*

5

10



The bass line of 'The Rose Tree' is written on a single staff with a bass clef and a key signature of one sharp (F#). The melody consists of a series of eighth notes, starting on G2 and ascending stepwise to D3, then descending back to G2. The notes are: G2, A2, B2, C3, D3, C3, B2, A2, G2. The piece ends with a double bar line.

Musical notation for the bass line of 'The Rose Tree'. The key signature is one sharp (F#). The melody consists of eighth notes, starting on G2 and ascending stepwise to D3, then descending back to G2. The notation is as follows: G2, A2, B2, C3, D3, C3, B2, A2, G2, A2, B2, C3, D3, C3, B2, A2, G2, A2, B2, C3, D3, C3, B2, A2, G2.

13

cresc. *ff*

The image shows a musical score for the 13th measure of 'The Rose Tree'. The staff is a single line with a bass clef and a key signature of one sharp (F#). The measure is divided into two parts by a vertical line. The first part contains a series of eighth notes: F#4, G4, A4, B4, C5, D5, E5, F#5. The second part contains a series of eighth notes: G5, A5, B5, C6, D6, E6, F#6, G6. The dynamic marking 'cresc.' is written below the first part, and 'ff' is written below the second part. The measure number '13' is written in a box above the staff.

Musical notation for the bass line of 'The Rose Tree' in G major, 3/4 time. The melody consists of eighth and quarter notes across 12 measures.

Poco più mosso (♩. = 104)

ff

Ancora più mosso (♩. = 120)

[illegible][illegible]