

Salome

Dance of the Seven Veils

Richard Strauss Op.54
arranged by Kazuhiro Morita

Allegro molto e con forza

7 *sfz* *sfz* *sfz* *sfz* *mf* *sfz*

13 *sfz* *ff*

20 *mf* *calando*

27 **Andante assai** $\text{♩} = 72$ *pp*

34 *pp*


41 *pp*

48 *poco rall.* **E** *a tempo* *p*

54 *p*

60 **F** *p*

Tuba in E^b

65 

72 *molto misurato* J *poco accel.* *a tempo*



pp

79 *accel.* **K** *a tempo* *accel.* *a tempo*

f sfz p *f sfz* p *mf* *p*

85 one player L

p

90

M tutti

p

98 *poco più animato* N

ff *dim.*

116 P *poco più animato*

f *p* *f*

123 *calando* **Tempo come prima (Andate assai)**

p

138

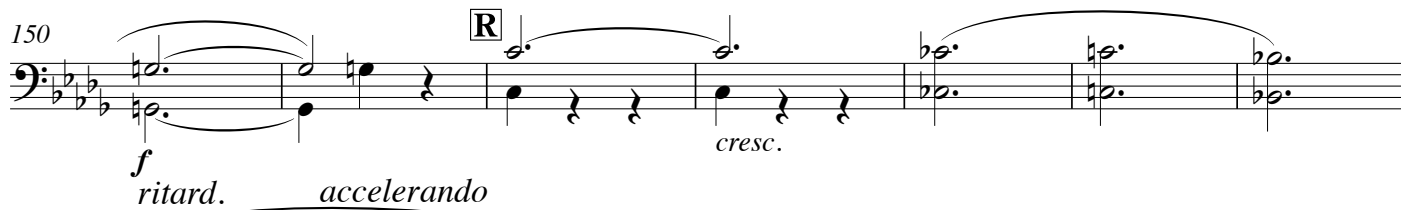
The musical score for Example 138 is written for a single staff in bass clef. The key signature has three flats (B-flat, E-flat, A-flat). The tempo/meter marking is 'Allegretto 3/4'. The score consists of six measures. The first measure has a half note G2, a quarter note F2, and a quarter rest. The second measure has a half note G2, a quarter note F2, and a quarter rest. The third measure has a half note G2, a quarter note F2, and a quarter rest. The fourth measure has a half note G2, a quarter note F2, and a quarter rest. The fifth measure has a half note G2, a quarter note F2, and a quarter rest. The sixth measure has a half note G2, a quarter note F2, and a quarter rest. A long melodic line is written above the staff, starting on a G4 and ending on a G4, with a slur over it. The notes are G4, A4, B4, C5, B4, A4, G4. The notes are connected by a slur, and there are ties between the first and second notes, and between the third and fourth notes.

Tuba in E \flat *poco a poco più mosso*

144



150



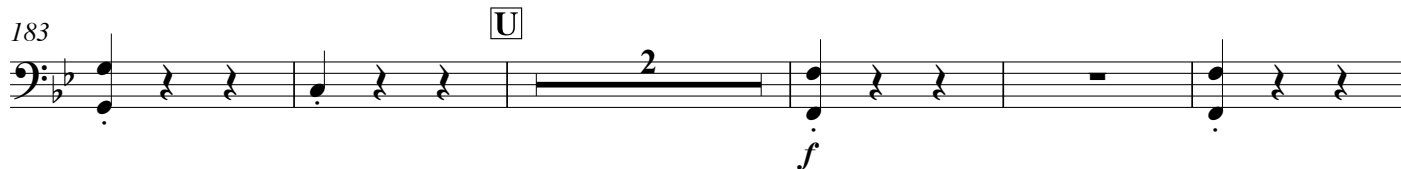
157



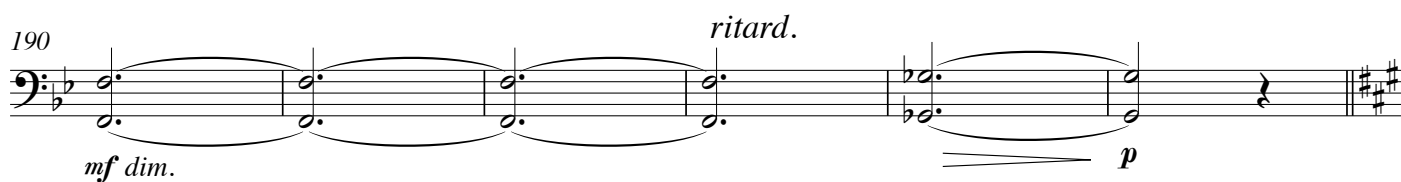
177



183



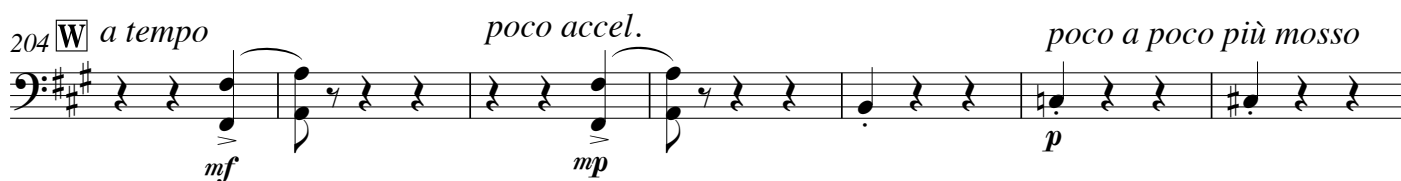
190



196



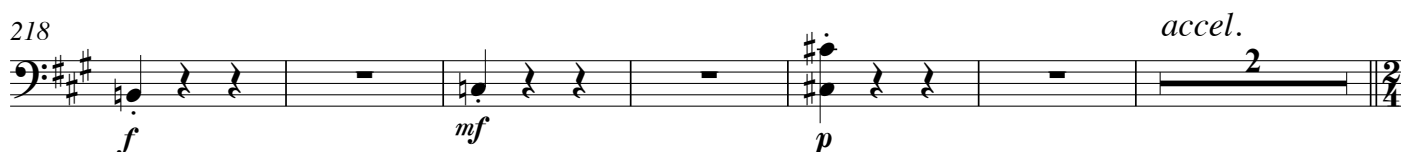
204



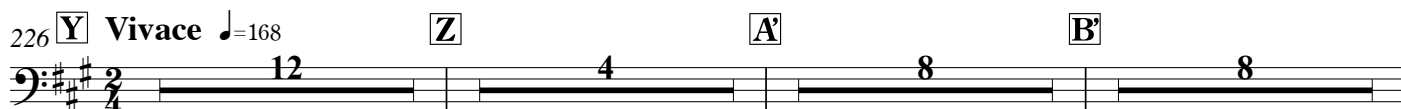
211



218



226



Tuba in E \flat

258 **C'**
mf

266 **D'**
mf

272 **E'** *accelerando*

278 **F'**
f

284

291 **G'** **H'**
ff

304 *sempre più accel.* **G.P.** **Presto**
ff *f*

313 **I'**
ff

318 $d = d.$

324 **K'**

329 **L'** *Poco più lento* *Presto ancora*
ff