

3rd & 4th Horns in E^b

Richilde Overture

for Wind Ensemble

Composed by G. PARÉS

Arranged by
Tomohiro Tatebe

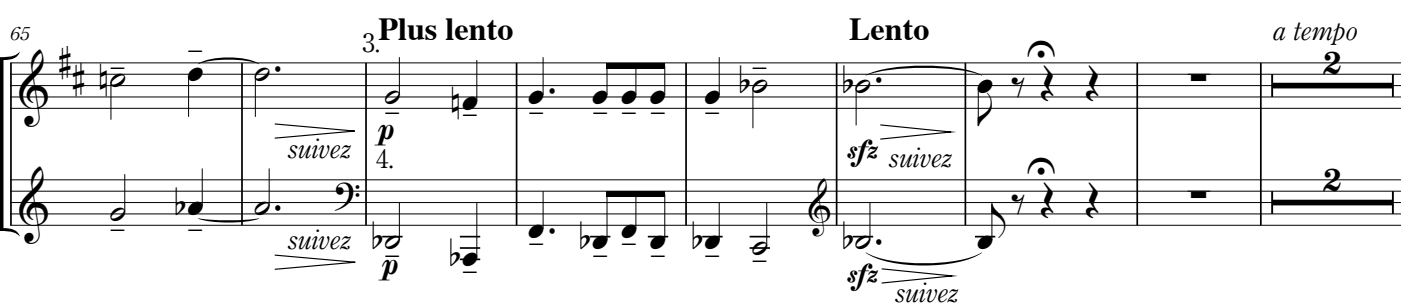
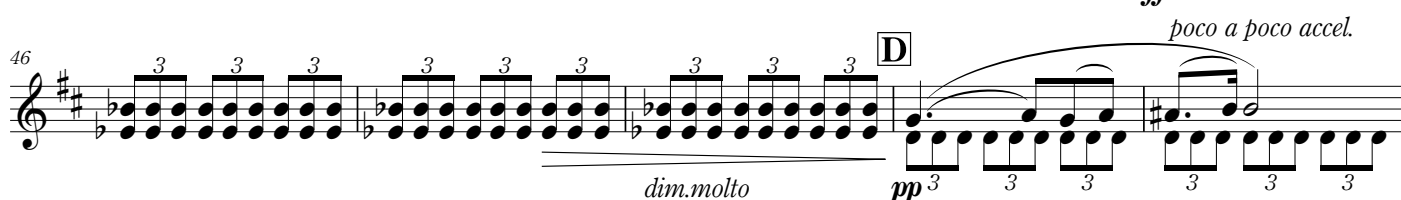
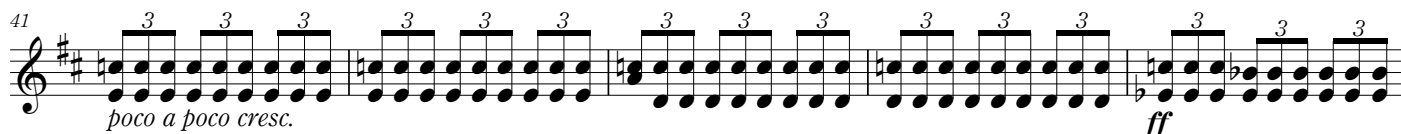
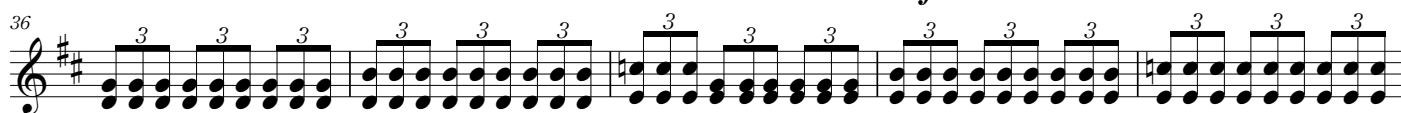
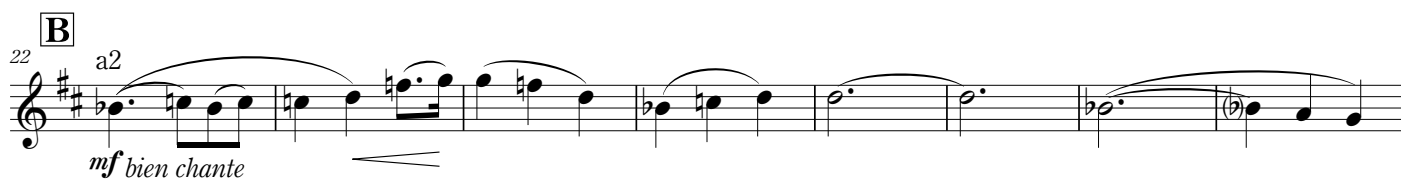
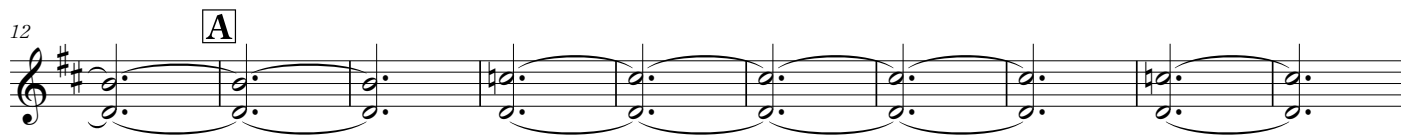
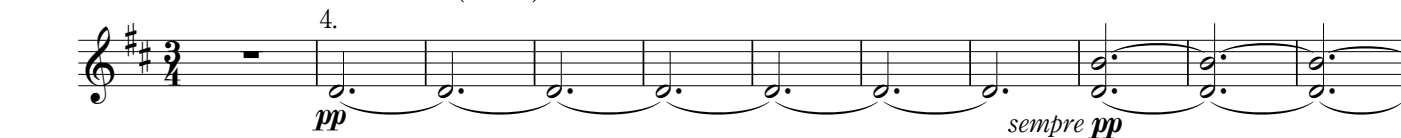
3rd & 4th Horns in E \flat

Richilde Overture

for Wind Ensemble

Comp. by G. PARES
Arr. by Tomohiro Tatebe (1991)

Andantino con moto (♩=82)



3rd & 4th Horns in E^b

75 **F** Allegro (♩=116)

mf *cresc.* *p subito*

82 *p poco cresc.* *mf* *sfz*

91 *cresc.* *cresc. molto* **G** *f*

97 4. *f*

103 *ff* *ff*

110 **H** 2 *p* 3. *mf* *mf*

118 *mf* *cresc. molto*

124 *f* *ff*

130 *f* *ff*

135 *espress.* *cedez un peu* *p dim.* **I** a tempo 8

3rd & 4th Horns in E^b

150 3.
pp poco cresc. dim. pp cresc.molto

160 **J** *Comoure facultative de la lettre **J** a la lettre **M**
pp p

170
poco a poco cresc. ff

180 **K** 3 3
mf ff ff

187 3 3 a2 3 3 3 3 a2
ff ff ff

193
ff

200 *rall.molto* **L** a tempo
sfz p

207
p poco cresc.

215
piu p cresc.molto

224 **M** Soli 3 3
p mf p

3rd & 4th Horns in E^b

231 *mf* poco a poco cresc. *p* *mf*

238 *cresc. molto* **N** *fff* **Largament et tres soutenu**

246 *sempre fff*

253 **G.P.** **G.P.** **O** *rall. molto* 3. 6

267 *sfz* *pp dolce* **P** **Allegro** (♩=116) *mf*

275 *cresc.* *p subito* *p poco cresc.*

283 *mf* *sfz* *cresc.*

291 *cresc. molto* **Q** *f*

297 4. *f* *ff*

303 *ff* **R** 2

3rd & 4th Horns in E \flat

311 *p* 3. *mf*

318 *poco a poco cresc.*

325 *sfz espress.* *rall. molto* **S** *a tempo* *p*

332 *ffz espress.* *suivez* *p* *poco cresc.*

342 *dim.* *pp* **T** *mf*

350 *poco a poco cresc.*

357 **U** *Soli* *f*

364 *sf* *sf cresc.*

372 *poco rit.* **V** *Allegro poco maestoso* ($\text{♩} = 96$)

380 *suivez* *fff*

387

394 *3* *3* *3* *3*

402 **W** *fff* *allarg. molto* *suivez*

410 *a tempo poco piu lento* *allarg.*