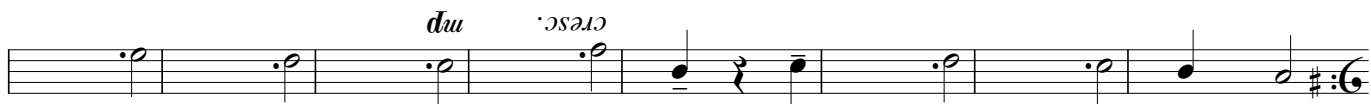


[G]



86



94



102



112

Allegro animato (♩ = ca. 144)

[I]



125

[J]

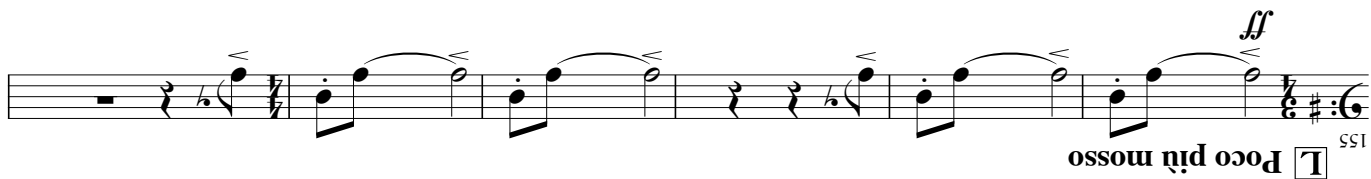


142

[K]

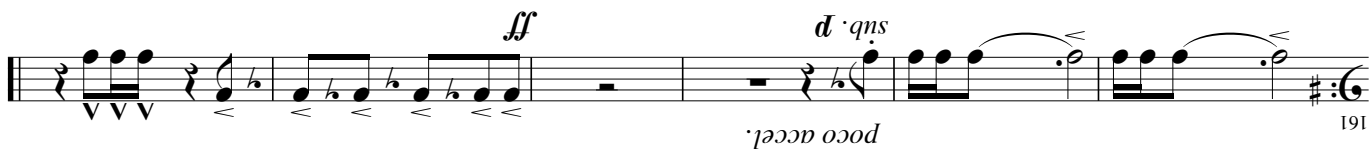


149



155

[L]



161

Gold Rush!

Composed by
Shin'ya Takahashi, 2002

Allegro animato (♩ = ca. 144)

The musical score for 'The Swan' by Camille Saint-Saëns is presented in a single system. The score is written for a piano and a vocal soloist. The piano part is in 3/4 time, and the vocal part is in 3/4 time. The score includes various musical notations such as notes, rests, and dynamic markings (p, mf, ff, dim, cresc.). The vocal part is marked 'molto rit.' and 'Moderato espressivo'.

The score is divided into two main sections: a piano introduction (measures 1-14) and a vocal solo (measures 15-78). The piano introduction is marked 'molto rit.' and 'Moderato espressivo'. The vocal solo is marked 'molto rit.' and 'Moderato espressivo'.

The piano introduction (measures 1-14) features a series of chords and single notes, with dynamic markings of p, mf, ff, dim, and cresc. The vocal solo (measures 15-78) features a series of notes and rests, with dynamic markings of p, mf, ff, dim, and cresc. The vocal part is marked 'molto rit.' and 'Moderato espressivo'.