

## Tuba in B<sup>b</sup>

# Weather Report

*for Wind Ensemble*

Shin'ya Takahashi (2010)

**Allegro brillante** (♩=ca. 160)

7

11

14

17

20

26

27 **Allegro con brio** (♩ = ca. 160)

32

35

38

43

44

50

53

56

61 **Molto meno mosso** (♩ = ca. 66)

Tuba in B $\flat$

**Tempo I**

(♩=ca. 160)

**66**



**74**



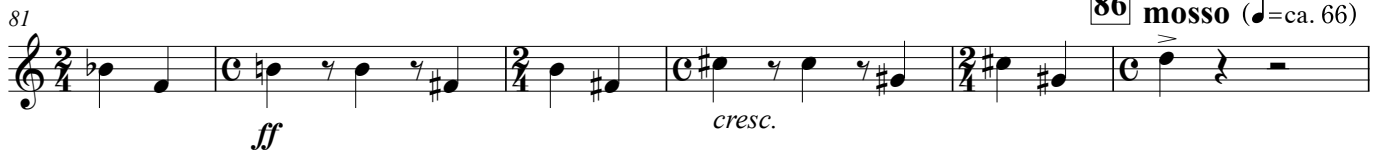
*cresc.*



**Molto meno**

**86**

**mosso** (♩=ca. 66)



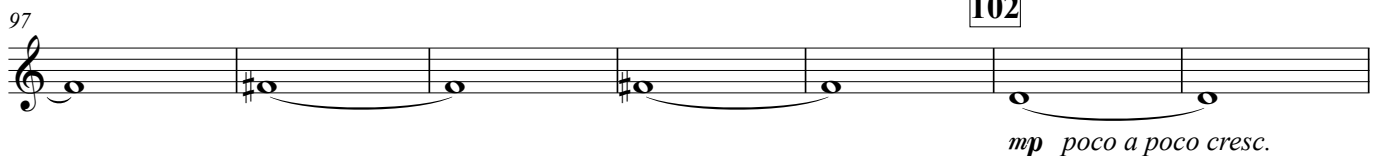
**Lento espressivo**

(♩=ca. 54)

**94**



**102**

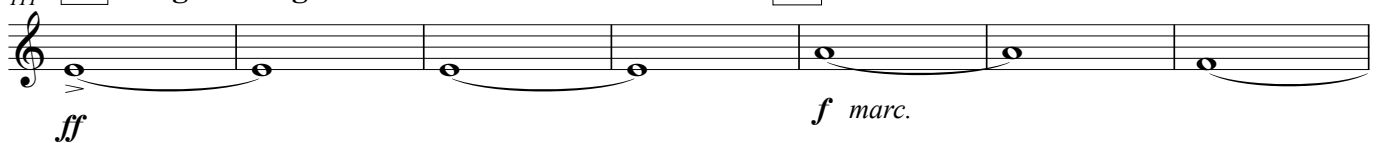


*allarg.*

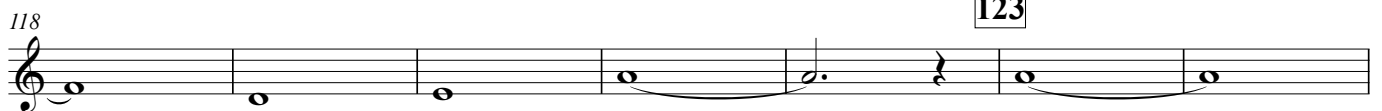


**111 Allegro energico** (♩=ca. 160)

**115**



**123**



Tuba in B $\flat$

