

B^b Tuba

Commissioned by Sagami High School Concert Band (Kanagawa, Japan)

THE BATTLE OF LEPANTO

Wind Ensemble

Hayato Hirose (2009)

Maestoso $\text{♩} = 60$

A

f *p* *f* *p* *f* *mp*

poco rit. - - - - -

Allegro animato $\text{♩} = 100$

B

ff *f* *mf* *mp* *mp*

mp *mp* *cresc.* *mf*

C

f *mf*

f *dim.*

D

mp marcato

mf *cresc.* *f* *mf*

E

f

ff *ff*

B^b Tuba

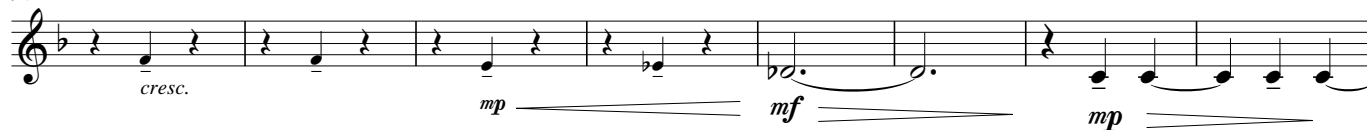
80 **F** **Andante** ♩=72
St. Bass cue (1 player)



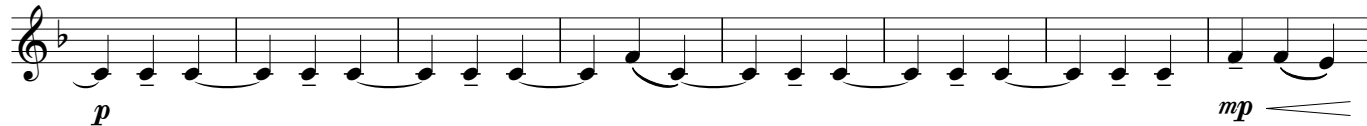
88 **G**



96



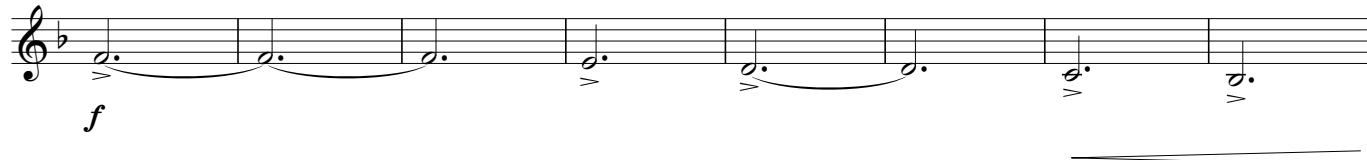
104 **H**



112 **I**



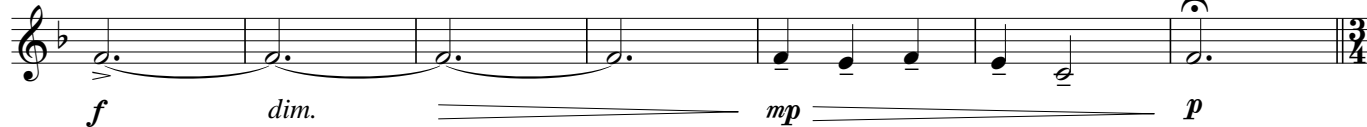
120 **J**



128



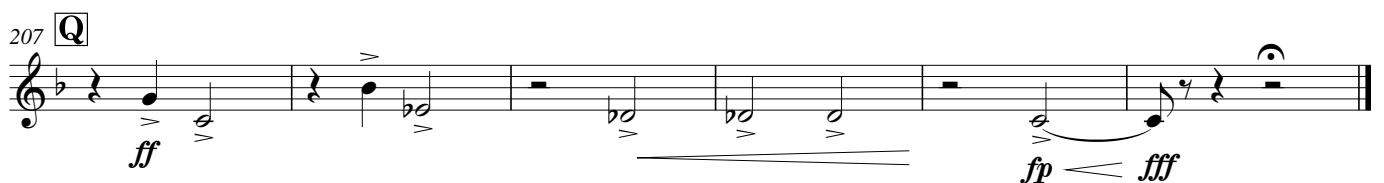
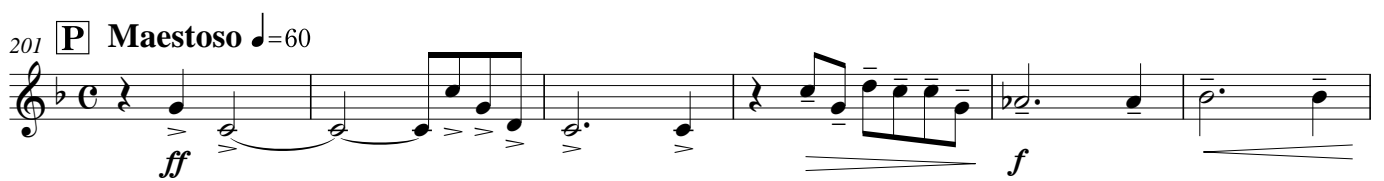
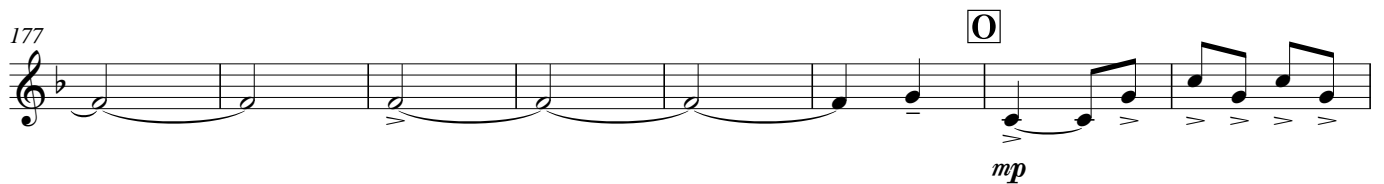
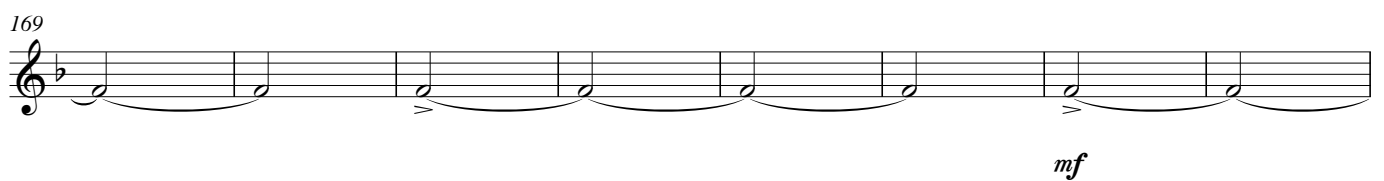
136 **K**



143 **Allegro** ♩=112



B \flat Tuba



A NEW PERSPECTIVE FOR FINE WIND BANDS ...

Johann Sebastian Bach
TOCCATA UND FUGE BWV 565
Transcribed by Kazuhiro Morita
ZOMS-A006

Georges Bizet
CARMEN FANTASY
for Wind Ensemble
Arranged by Eiji Suzuki
ZOMS-A008

Emmanuel Chabrier
PASTORAL SUITE Part II
Transcribed by Yusaka Yoshida
ZOMS-A002

Edvard Grieg
NORWEGIAN DANCES IV
Transcribed by Yuusi Kaneda
ZOMS-A004

Yasuhide Ito
FUNA-UTA for Band
Based on two Japanese Folk Songs:
1. Kompira Fune-fune · 2. Ondo no Funa-uta
ORMS-82006

Franz Lehar
MERRY WIDOW SELECTIONS
Arranged by Eiji Suzuki
ZOMS-A011

Kinya Matsuura
HAN-NYA
Dramatic Fantasy
ZOMS-9601

Jun'ichi Naito
UNDER THE FLAG OF GLORY
Ceremonial March
ZOMS-0101

Giacomo Puccini
FANTASY ON "MADAME BUTTERFLY"
Arranged by Yo Goto
ZOMS-A017

Shin'ya Takahashi
JALAN-JALAN
-Vision of the Isle of the Gods-
for Symphonic Band
ZOMS-A017

Tomohiro Tatebe
SUITE ON CELTIC FOLK SONGS
for Concert Band
1. March · 2. Air · 3. Reel
ZOMS-A019

Ambroise Thomas
RAYMOND OVERTURE
Transcribed by Teruaki Matsushiro
ZOMS-A003

BRAVO MUSIC

www.bravomusicinc.com