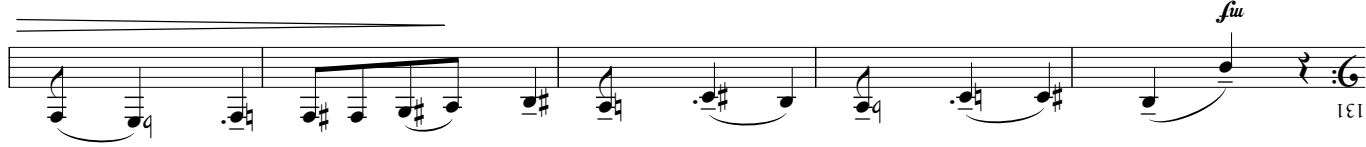
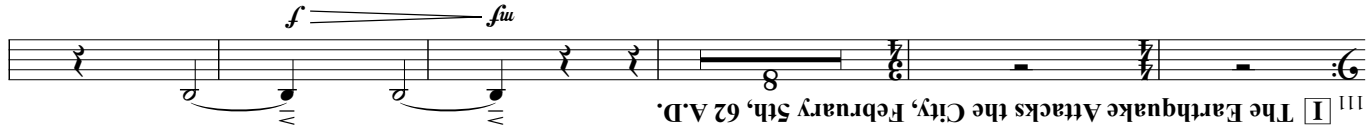


Calm Suburbs and the Citizens Living in Peace

98 [H] *Artoso* ( $\bullet$  = ca.60)

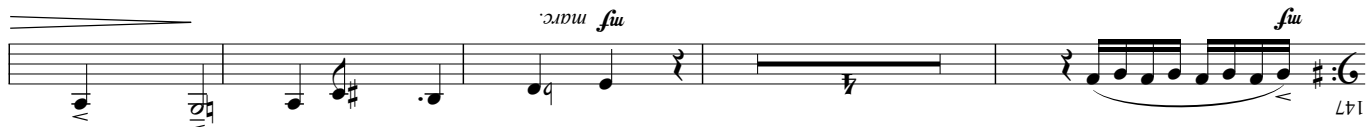
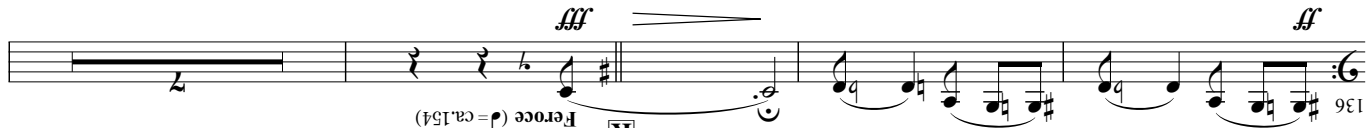


111 [I] The Earthquake Attacks the City, February 5th, 62 A.D.



The Eruption of Mt. Vesuvius on August 24th, 79 A.D.

[K] *Feroce* ( $\bullet$  = ca.154)



*Commissioned by and dedicated to the Hofstra University Symphonic Band  
Dr. Peter Loel Boonshaft, conductor*

## The Ruins Know the Long and Magnificent History

## The Prosperity of the City. The Magnificent Mt. Vesuvius

© Copyright 2011 by Brain Co., Ltd. (Hiroshima, Japan)  
All rights reserved.

224 *f* *ff* *molto allargando*

The Tragedy of Pompeii

230 *ffz* *Serioso* ( $\text{♩} = \text{ca. } 60$ )

Pompeii Today

243 *f* *ff* *Elegante* ( $\text{♩} = \text{ca. } 63$ ) *(allargando)* *(Stringendo)*

(Stringendo)

249 *f* *mf* *mf* *f marc.* *allargando*

The Awe-Inspiring Ruins Tell Us About the Ancient Civilization

253 *f* *ff* *Appassionato* ( $\text{♩} = \text{ca. } 63$ )

257 *f* *ff* *poco a poco cresc.*

261 *f*

*molto allargando* *Brillante a tempo*

266 *ff*

271

277 *ff* *molto allargando*

219 *mf*

214 *ff*

207 *mf* *f* *sfz*

202 *ff*

197 *f poco a poco cresc.*

192 *mf poco a poco cresc.* *poco a poco cresc.*

187

182 *du*

177 *sfz*

172 *f*

166 *f*

**[M]**

**[O]**

**[P]**

**[N]**