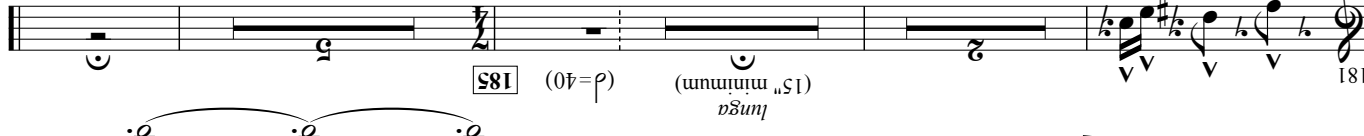
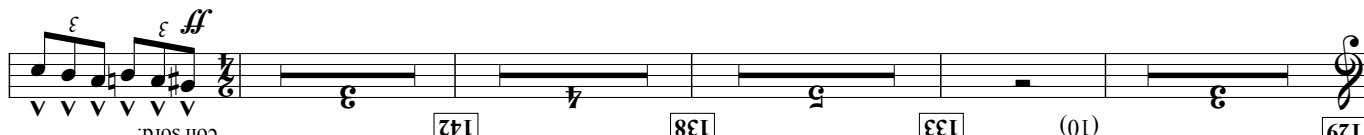
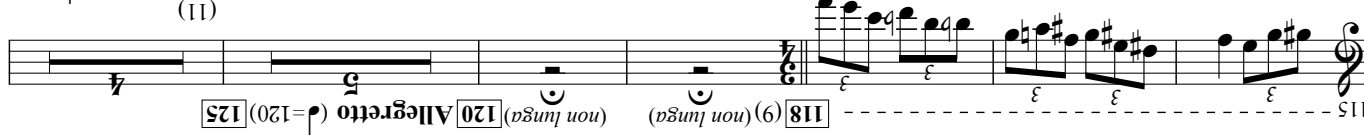
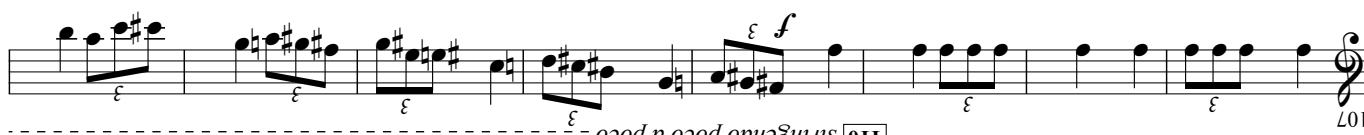
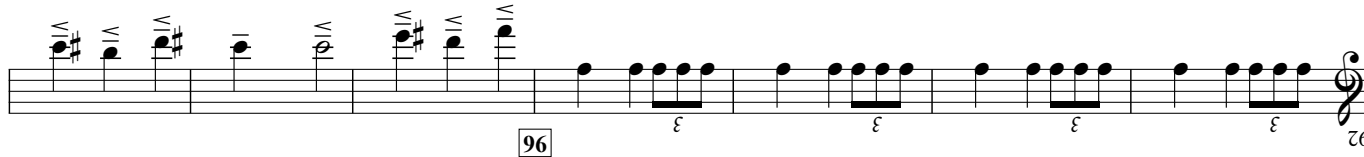
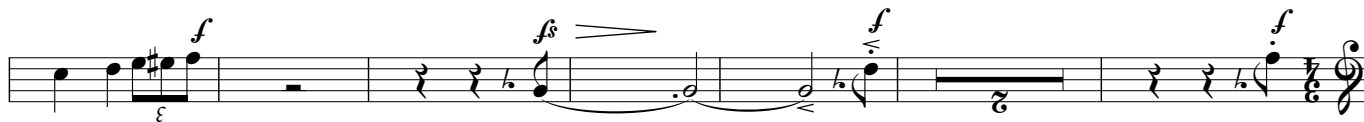


[75] **Allegro** ($\text{♩} = 144$)

(6)



*allaccia
al secondo movimento*

GLORIOSA

Symphonic Poem for Band
吹奏楽のための交響詩「ぐりりよぎ」

I. Oratio

Itō, Yasuhide
(1) CHACONNE
Moderato religioso,
nello stile del canto
gregoriano

Musical score for "L'Espresso" by Luciano Berio. The score is written for voice and piano. The key signature is one sharp (F#), and the time signature is 4/4. The score is divided into measures, with measure numbers 11, 15, 20, 24, 29, 32, 39, 47, 53, 54, 58, 61, 63, 68, and 69 indicated. The lyrics are in Italian, with the word "Espresso" repeated throughout. The score includes various musical notations such as notes, rests, dynamics (e.g., *molto cantabile*, *molto*, *ff pesante*, *f*, *mf*, *d*, *mp*), and performance instructions (e.g., *allargando poco a poco*, *cresc. poco a poco*, *stacc.*). The score is presented in a single system, with the vocal line on the upper staff and the piano accompaniment on the lower staff.