

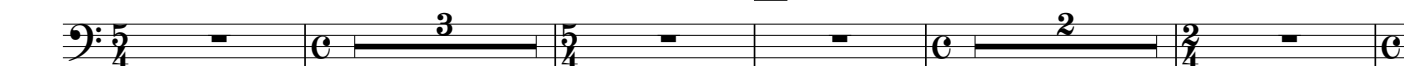
Euphonium in B \flat
(Bass Clef)

百年祭
A Centenary Celebration

福島弘和 作曲
Hirokazu Fukushima, 2005

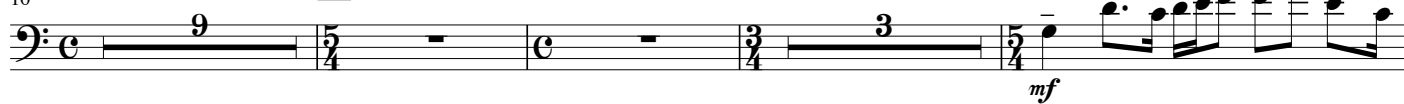
Andante $\text{♩} = 72 \text{ ca.}$

A

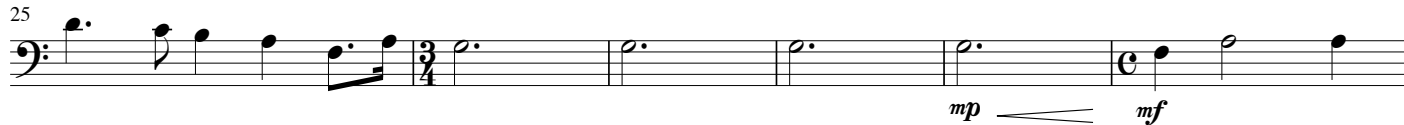


10

B



25



31

C Allegro $\text{♩} = 144 \text{ ca.}$



38



44

D



49



55

E



61



67

F



Euphonium in B^b (B.C.)

73 G

p

80

mf *fp*

86

f

91 H

mp *f*

98

103 I J

p *cresc.*

113

120 K

f

124

mp

129 L

mf *f*

Euphonium in B^b (B.C.)

136

f

140

ff

M

145

rit.

fff

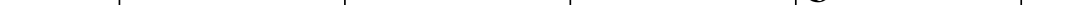
150 **Tempo I** ♩ = 72 ca. N

mp *ten.*

157

mf

163



Measure 163 (Bass Clef): G₂, F₂, E₂, D₂, C₂, B₁.

169 **P**

f *più f* *p*

175

Example 175 is a single-staff musical score in bass clef. It begins with a half note G2, followed by a quarter note A2, a quarter note B2, and a quarter note C3. This is followed by a half note D3, a quarter note E3, a quarter note F3, and a quarter note G3. The melody then continues with a half note A3, a quarter note B3, a quarter note C4, and a quarter note D4. The score concludes with a half note E4. The dynamics are marked *mp* (mezzo-piano) at the beginning and *f* (forte) at the end, with a crescendo hairpin indicating the increase in volume.