

Tuba in E^b
(Treble Clef)

ら・こんせーる・のくちゅーる 設立30周年 記念曲

三日月の彼方
Over the Crescent Moon

高橋宏樹 作曲
Hiroki Takahashi (2014)

Fanfare (♩.=94 ca.)

Musical notation for the Fanfare section, measures 1-6. The notation is in treble clef with a key signature of one flat (B-flat). The time signature is 6/8. The first measure is a whole rest. The second measure starts with a forte (f) dynamic. The notation includes eighth and quarter notes, with some beamed eighth notes. A crescendo hairpin is shown under measures 5 and 6, ending with a fortissimo (ff) dynamic.

Lamentoso

(♩.=74 ca.)

A

Musical notation for the Lamentoso section, measures 13-18. The notation is in treble clef with a key signature of one flat. The time signature is common time (C). The first measure starts with a mezzo-forte (mf) dynamic. The notation includes quarter and eighth notes. A crescendo hairpin is shown under measures 14 and 15, leading to a fortissimo (ff) dynamic in measure 16. Measure 17 starts with a mezzo-piano (mp) dynamic. Measure 18 is a whole note. A box labeled 'A' is placed above measure 17.

Musical notation for the Lamentoso section, measures 19-24. The notation is in treble clef with a key signature of one flat. The time signature is common time. The notation includes quarter and eighth notes. A decrescendo hairpin is shown under measures 23 and 24.

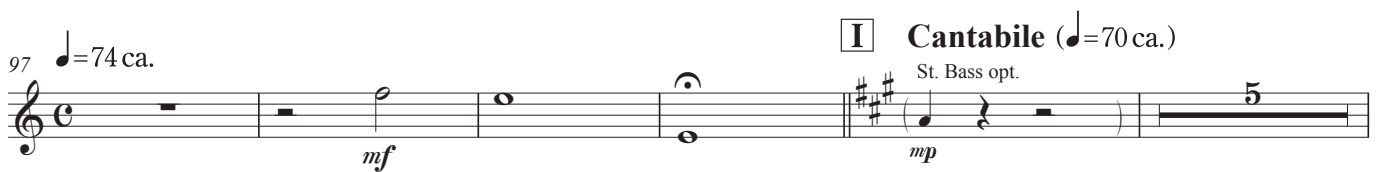
Musical notation for the Lamentoso section, measures 25-30. The notation is in treble clef with a key signature of one flat. The time signature is common time. The notation includes quarter and eighth notes. A box labeled 'B' is placed above measure 25. The first measure starts with a forte (f) dynamic.

Musical notation for the Allegretto section, measures 31-37. The notation is in treble clef with a key signature of one flat. The time signature is 6/8. The first measure starts with a ritardando (rit.) marking. The notation includes quarter and eighth notes, with some beamed eighth notes. A decrescendo hairpin is shown under measures 32 and 33, leading to a piano (p) dynamic in measure 34. A crescendo hairpin is shown under measures 35 and 36, leading to a forte (f) dynamic in measure 37. A box labeled 'C' is placed above measure 38.

Musical notation for the Allegretto section, measures 38-43. The notation is in treble clef with a key signature of one flat. The time signature is 6/8. The notation includes quarter and eighth notes, with some beamed eighth notes. A box labeled 'C' is placed above measure 38.

Musical notation for the Allegretto section, measures 44-49. The notation is in treble clef with a key signature of one flat. The time signature is 6/8. The notation includes quarter and eighth notes, with some beamed eighth notes. A box labeled 'D' is placed above measure 44.

Tuba in E^b (T.C.)



Tuba in E^b (T.C.)

107 **J**

mp

113 **K**

mf

119 **L**

mf

125

p

131 **M**

p

mp

cresc.

rit.

137 **N** *a tempo*

ff

143 **O**

mp

151 **P** *Allegretto* (♩. = 90 ca.)

p

164 **Q** *St. Bass opt.*

pp

cresc.

ff

mp

170

mf

Tuba in E^b (T.C.)

