

2nd Horn in E \flat

106 12 114 117 123 137 147 156 165 174 184 193 203 212 220 224 23

Meno mosso $\text{♩} = 72 \text{ ca.}$

Andante $\text{♩} = 88 \text{ ca.}$

Poco più mosso $\text{♩} = 144 \text{ ca.}$ *cresc.*

Allegro $\text{♩} = 138 \text{ ca.}$

Slow *meno mosso* *poco rit.*

rit. *mf* *f* *mf* *f* *ff* *p*

2. *mf* *mf* *f* *f* *ff* *p*

Frau Luna

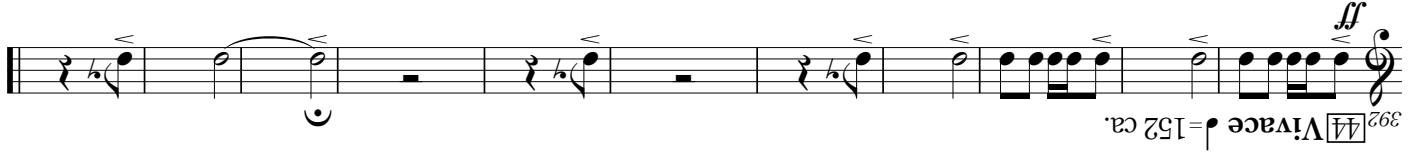
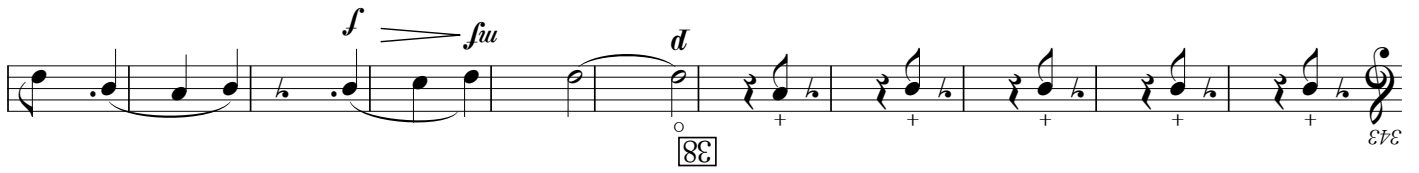
Highlights from the Operetta

Paul Lincke (1866-1946)
arr.by Makoto Onodera

Musical score for "Festmarsch" by Franz Schubert, Op. 108, No. 1. The score is in 3/4 time, key of D major, and consists of 10 measures. It features a variety of musical notations including dynamics (*f*, *ff*, *mf*, *p*), articulation (accents, slurs), and performance instructions (Andantino, Valse, Meno mosso, Allegro, Animato, Marcia). The score is divided into sections: 1. Moderato (Measures 1-4), 2. Animato (Measures 5-8), 3. Marcia (Measures 9-10). The score is written for a single melodic line on a grand staff.

2nd Horn in E^b

- 4 -



2nd Horn in E \flat

[Schlösser, die im Monde liegen]

227 **[25] Meno mosso** $\text{♩} = 56$ ca. **[26] Più mosso** $\text{♩} = 66$ ca.

242 **[27] Valse lento** $\text{♩} = 84$ ca.

251 **[28] Poco più** **accel.** **cresc.**

259 **[29] Più mosso** $\text{♩} = 126$ ca.

268 **[30]** **mp cresc.** **ff** **mf** **f** **ff**

276 **[31] Marcia, Allegro** $\text{♩} = 126$ ca.

288 **[33]** **f** **mf** **d** **f** **mf** **d**

299 **[34]** **f** **ff**

307 **[35]**