

**Tuba in B $\flat$**   
**(Bass Clef)**

Commissioned by Roosevelt High School Symphonic Band, Hawaii (USA)

ルーズヴェルト高校シンフォニックバンド委嘱作品

# FOUR SEASONS OF JAPAN

古都 — 四季の彩り

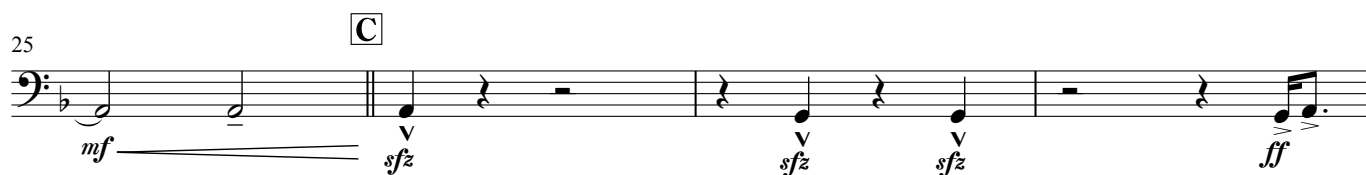
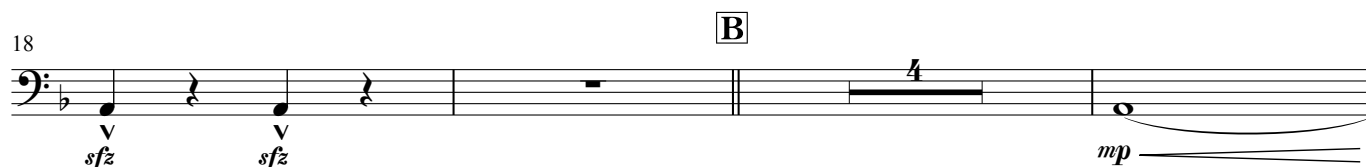
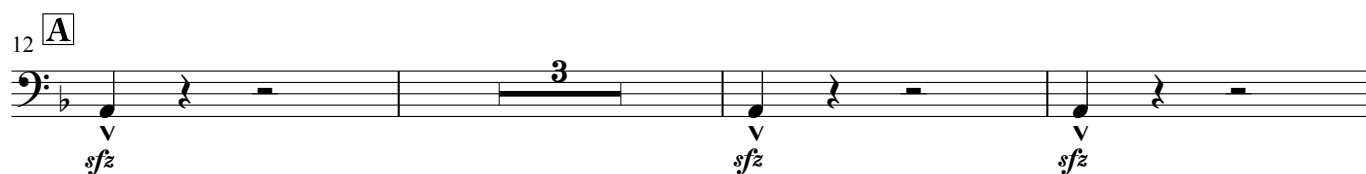
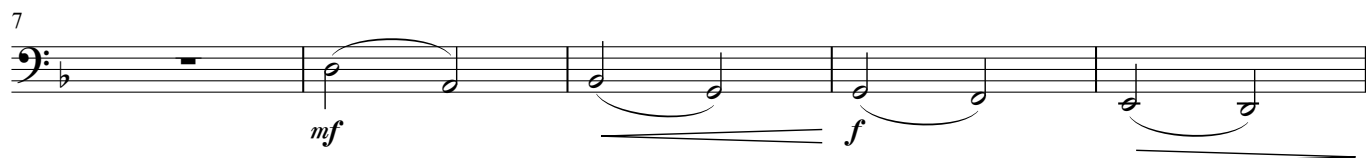
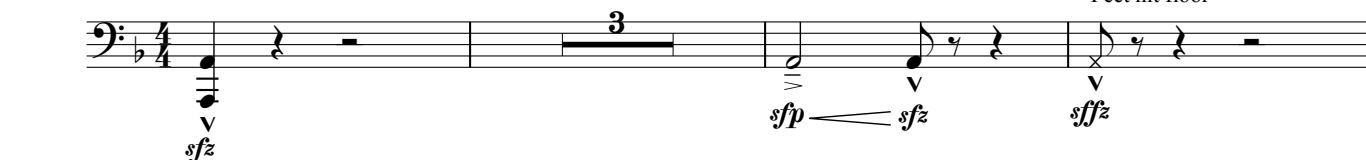
Satoshi YAGISAWA

八木澤 教司 作曲

**Autumn - The Maple Road**

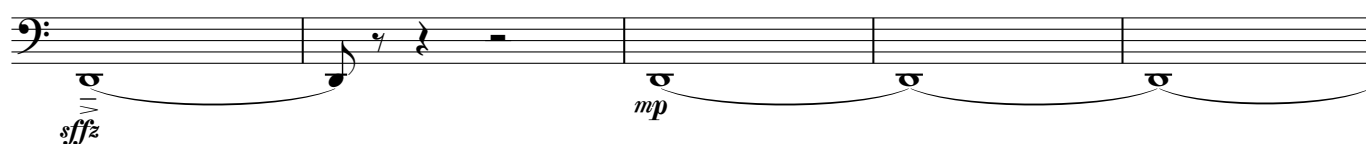
**Energico** (♩ = ca.84)

\* Feet hit floor



**Winter - Snow Mountains**

**Feroce** (♩ = ca.144)



Tuba in B $\flat$  (Bass Clef)

43 **E**

*f* *mp* *marc.*

47

*mf* *f*

51 **F** **G**

*mp* *f* *mp*

60

*mf*

65 **H**

*f* *ff*

70

*f*

74 **I**

*ff*

79

**J**

84

*fff*

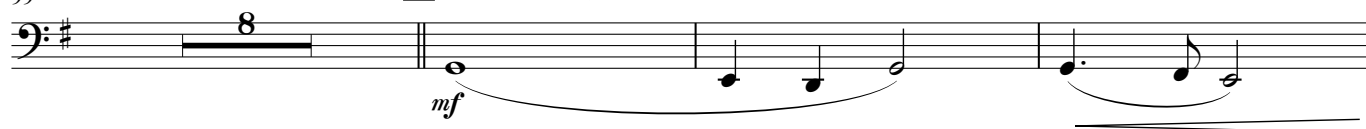
89 **K** **Misterioso** (♩ = ca. 63)

*mf* *mp* *Ritardando*

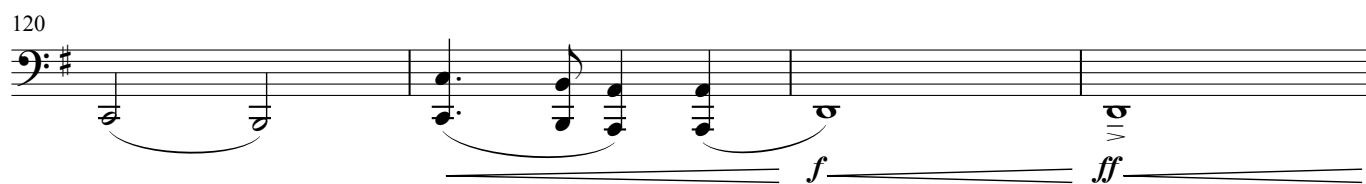
Spring - Cherry Blossom

Tuba in B $\flat$  (Bass Clef)

99 **L** Amabile (♩ = ca. 63) **M** Cantabile (♩ = ca. 69)

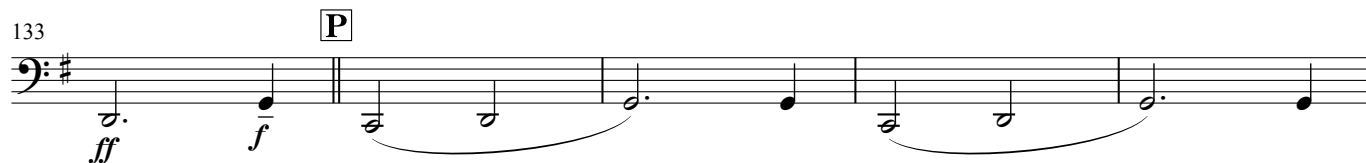
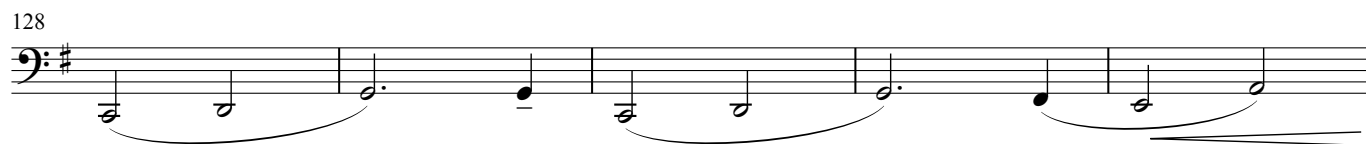


115 **N** Con moto (♩ = ca. 72)



Summer - Fireworks

124 (Allargando) **O** Appassionato (♩ = ca. 72)



143 Allargando **Q** Grandioso (♩ = ca. 72)

