

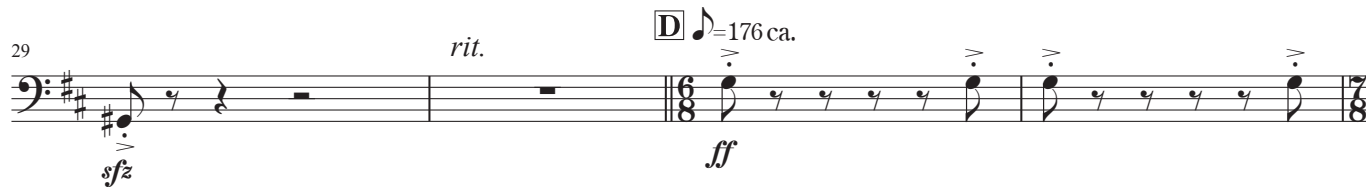
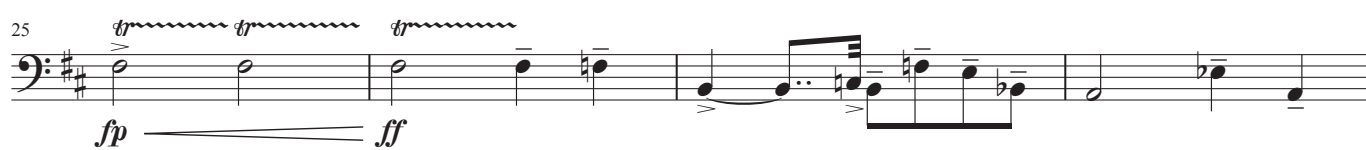
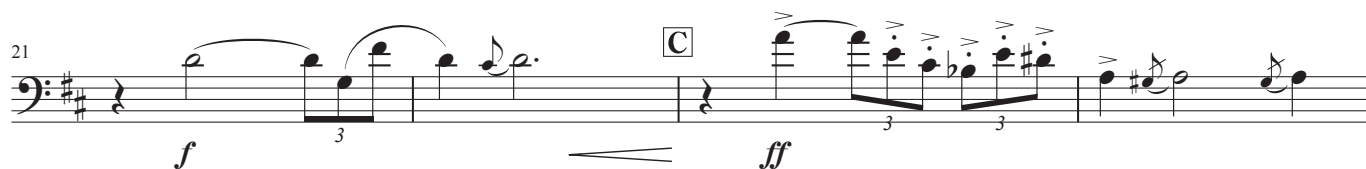
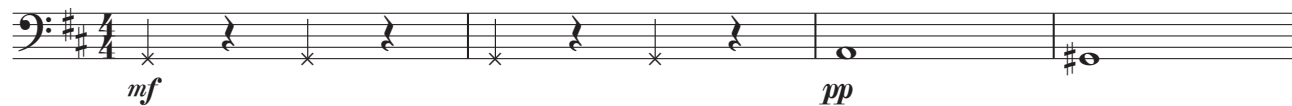
断続のスカレット

Scarlet
(2018)

川崎市立橘高等学校吹奏楽部 委嘱作品

江原大介
Daisuke Ehara $\text{♩} = 52 \text{ ca.}$

tap the instrument noise



Euphonium in B^b

41



Example 41

45 **F**

f *fp* *f* *fp* *f* *fp*

51

51

f *fp* *ff*

57

ff f ff f

62 G

8

7

7

ff

ff

H

86

The musical score for the bass line of 'The Rose Tree' is written in bass clef with a key signature of one sharp (F#). The piece is in 3/4 time. The notation includes a forte (ff) dynamic marking at the beginning, a triplet of eighth notes, and a piano (pp) dynamic marking. The score concludes with a fortissimo (ff) dynamic marking and a fermata over the final note.

[illegible]

99 

102

J ♩ = 80 ca.

breath tone

f >

115 breath tone K

f

Euphonium in B \flat

121

f — *pp* — *f* *f* — *pp* — *f*

127

mf *accel.*

131 \square $\text{♩} = 96 \text{ ca.}$

f *accel.*

135 $\text{♩} = 108 \text{ ca.}$

f *accel.*

139 $\text{♩} = 120 \text{ ca.}$

f *accel.*

143 $\text{♩} = 138 \text{ ca.}$

f *accel.*

147 $\text{♩} = 152 \text{ ca.}$

mp — *f* — *mp* — *fp* — *ff*

151 $\text{♩} = 168 \text{ ca.}$

mp — *f* — *mp* — *fp* — *flatt.*

155 \square $\text{♩} = 184 \text{ ca.}$

ff

Euphonium in B \flat

159 *fp*

163 *ff* *sfz* *sfz*

167 *sfz* *sfz*

171 *ff*

175 *fp* *accel.*

179 [N] $\text{♩} = 200 \text{ ca.}$ *fff* *p*

183 *fffp*

187 *fff* *ppp*

I $\text{♩} = \text{ca.} 4 \text{ sec.}$ II $\text{♩} = \text{ca.} 4 \text{ sec.}$ III $\text{♩} = \text{ca.} 4 \text{ sec.}$ repeat & repeat as fast as possible

191 *mf* *lunga* *ffff* *sfz*

$\text{♩} = \text{ca.} 6 \text{ sec.}$ \times 音符の音程は任意