

Tuba in B^b (Treble Clef)

「刈干切り唄」の主題による変奏曲

Variations on a Theme of Kariboshikiriuta

福島弘和 作曲

Hirokazu Fukushima (2017)

Largo (♩=66 ca.)

[illegible]

Theme

7 **Theme** A

8 2

mf *mf*

Detailed description: This musical notation shows measures 7 through 12 of the 'Theme' section. Measure 7 contains an 8-measure rest. Measure 8 begins with a half note G4 (marked *mf*), followed by a half note F#4. Measure 9 contains a half note E4, a half note D4, and a half note C4. Measure 10 contains a 2-measure rest. Measure 11 begins with a half note G4 (marked *mf*), followed by a half note F#4. Measure 12 contains a half note E4, a half note D4, and a half note C4. A crescendo hairpin is located between measures 9 and 10.

21

21 B

f *mf* *mp*

6

32

Var. I Allegro (♩=128 ca.)

32 **Var. I Allegro** (♩=128 ca.) C

6

mf

f

43

43

mf

49


49

Measure 49: Treble clef, key signature of one sharp (F#). The melody consists of an eighth rest, followed by an eighth note G4, a beamed eighth-sixteenth pair (A4-B4), an eighth note C5, an eighth rest, an eighth note D5, an eighth note E5, a beamed eighth-sixteenth pair (F#5-G5), an eighth note A5, an eighth note B5, an eighth note C6, an eighth note B5, an eighth note A5, an eighth note G5, a quarter note F#5, a quarter note E5, a quarter note D5, a quarter note C5, and a quarter note B4.

Var. II Allegro moderato

(♩=112 ca.)

54 *rit.* **Var. II Allegro moderato**
(♩=112 ca.) D



mp

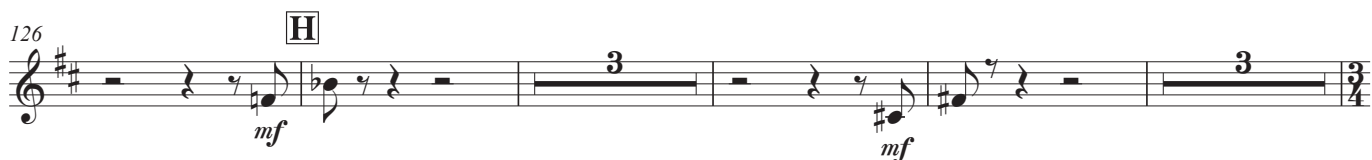
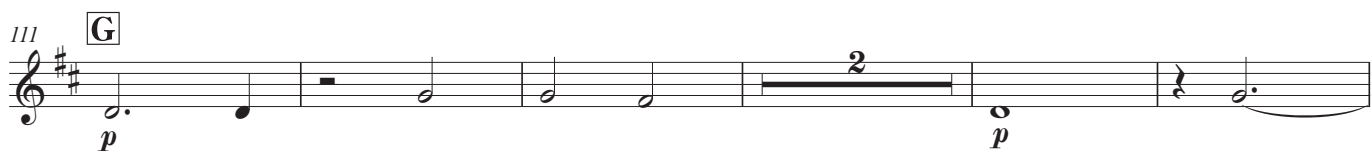
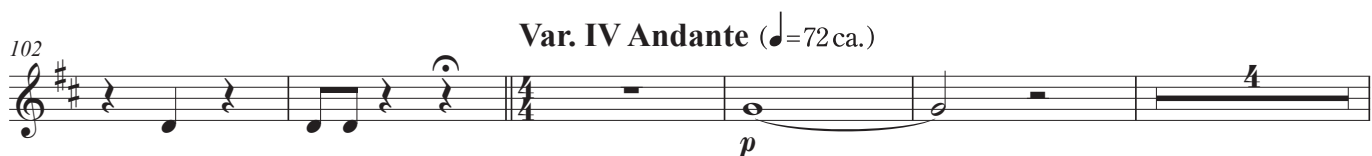
69

Var. III Allegro Vivo (♩=144 ca.)

69 Var. III Allegro Vivo (♩=144 ca.)

f

Tuba in B^b (T.C.)



Tuba in B \flat (T.C.)

136 **I**

mp *mf*

142 **Var. VI Allegro Vivo** (♩=144 ca.)

f *mp*

148

154 **J**

mf

159

f

164 **Coda Tempo I** (♩=72 ca.)

ff

170 *rit.* **Allegro Vivo** (♩=144 ca.)

mf *mf*

176 **K**

f *ff*

182

f