

2nd Trombone in B \flat
(Bass Clef)

聖なる丘へ
To the Sacred Hill

福島弘和 作曲
Hirokazu Fukushima (2017)

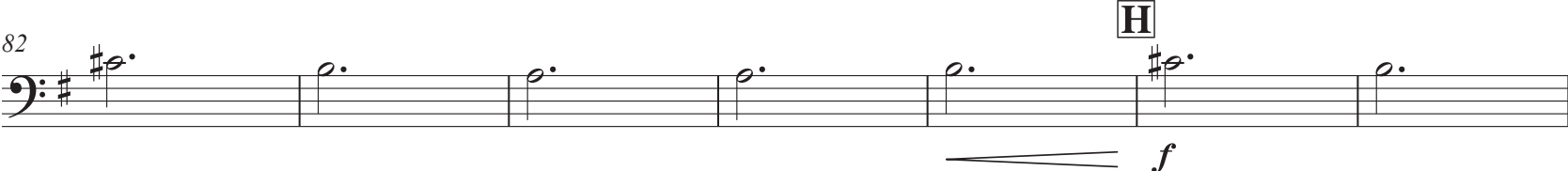
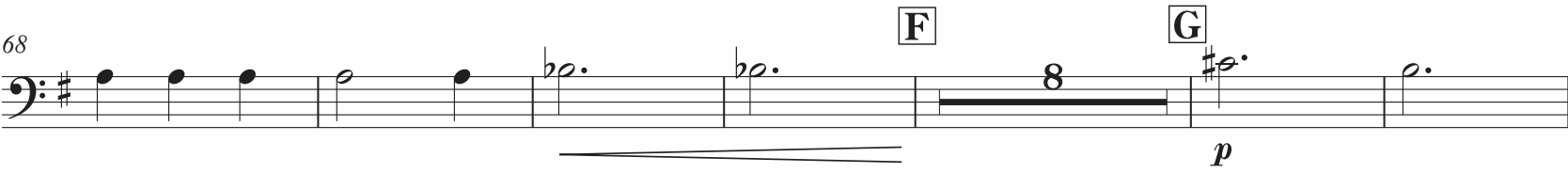
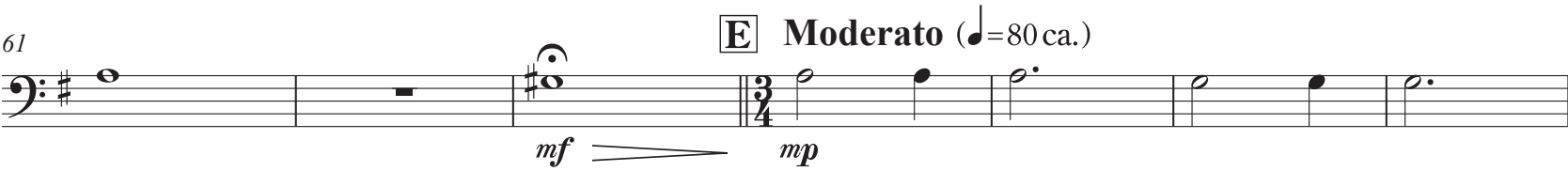
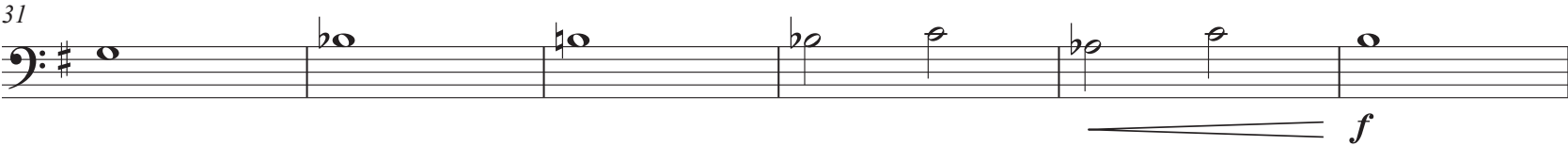
Andante (♩=60 ca.)

rit.



19 **A** Allegro (♩=132 ca.)

B



2nd Trombone in B^b (B.C.)

101 **I** **Vivo** (♩=144 ca.)

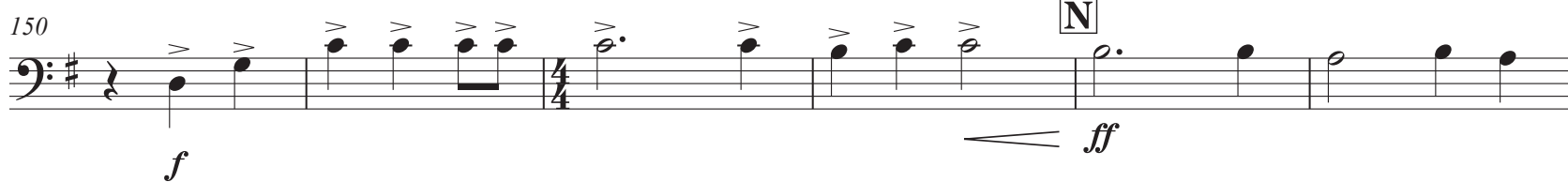
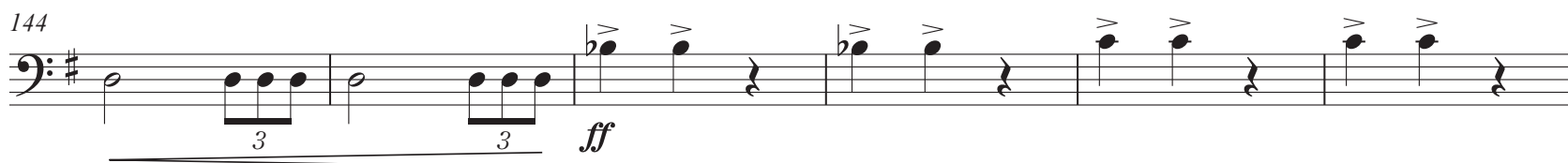
J

K



130 **L**

M



162 **O**

