

1st Trombone in B $\flat$   
(Treble Clef)

# "The Merry Widow" Selections

for wind ensemble

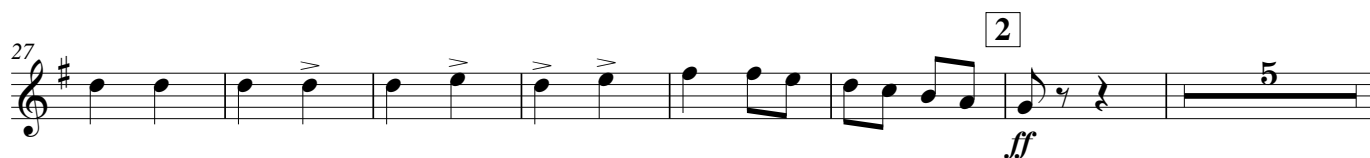
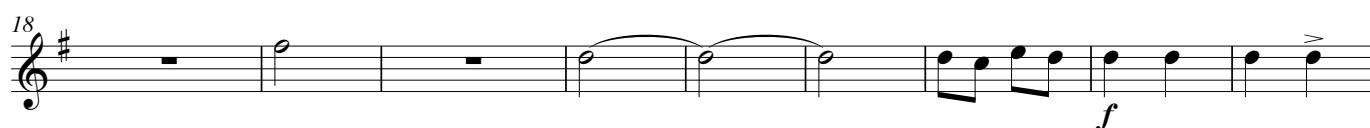
< Large version >

Franz Lehár

Arranged by Eiji Suzuki

[ No.1 : Opening Chorus ]

**Prestissimo**

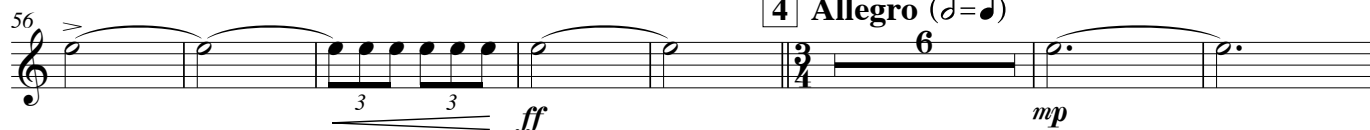


**[ 3 ] Marcia**

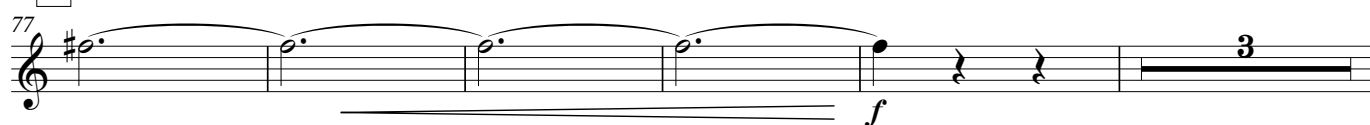


[ No. 3 : Entrance ]

**[ 4 ] Allegro** (♩ = ♩)



**[ 5 ]**

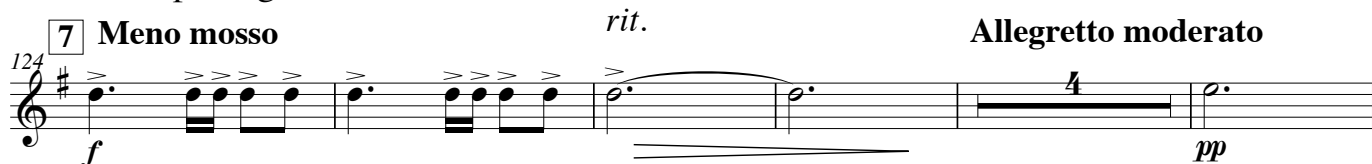




[ No. 3a : Ball-Music ]



[ No. 7 : Opening Chorus ]



[ No. 7 : VILIA ]

157 *rit.* **10** **Più mosso**  
Option *f* *mp*

165 *play* *mf*

173 *rit.* *a tempo* *pp* *p* *mf* *rit.*

182 **11** **Meno mosso** **12**  
16 *p*

205

213 **13** **Broadly** *cresc.* *ff*

221 *molto allarg.* **Meno mosso** *mf* *fp* *ff* *fff*

229 *a tempo* (**13**) *mf*

[ No. 9 : March ~ Trio + No. 18 : Finale ]

238 **14** **Tempo di Marcia** *p*

246

254 **15** *f* *p*

*1st Trombone in B♭ (Treble Clef)*

262 *cresc.*

269 **16** *fz* *f cresc.*

280 **17** *f <* *f <* *f* *p*

297 **18** *accel.*

305 *cresc.* *fz*

313 **19** *molto allarg.* *cresc.* **20** *Presto* *ff*

322

330 **21**

338 *cresc.*

346 **22** *Più mosso*

354