

Tuba in E^b
(Treble Clef)

喜歌劇「こうもり」セレクション (小編成版)

"Die Fledermaus" Selections

from an Operetta in 3 Acts (Small Version)

Johann Strauss II

Arr. by Eiji Suzuki (2017)

Allegretto con fuoco

7

Measures 1-6 of the 'Allegretto con fuoco' section. The music is in 2/4 time and E-flat major. It begins with a forte (f) dynamic. Measures 1-2 contain eighth-note patterns. Measures 3-4 are quarter notes. Measures 5-6 are eighth-note patterns. A crescendo hairpin is shown under measures 3-4.

17 **A**

Measures 17-24 of the 'Allegretto con fuoco' section. Measure 17 starts with a piano (p) dynamic. Measures 18-20 are quarter notes. Measure 21 has a crescendo (cresc.) marking. Measures 22-24 are quarter notes. The section ends with a key signature change to E major (two sharps).

25 **B** **Vivo**

Measures 25-34 of the 'Allegretto con fuoco' section. Measure 25 has a 'cresc. e accel.' marking. Measures 26-28 are quarter notes. Measure 29 has a forte (f) dynamic. Measures 30-34 are quarter notes. A triplet of eighth notes is marked in measure 29.

35

Measures 35-45 of the 'Allegretto con fuoco' section. Measures 35-40 are quarter notes. Measure 41 has a crescendo (cresc.) marking. Measures 42-44 are eighth notes. Measure 45 has a forte (f) dynamic and a 'fz' (forzando) marking. A fourth-note rest is marked in measure 45.

46

Measures 46-54 of the 'Allegretto con fuoco' section. Measures 46-50 are quarter notes. Measure 51 has a forte (f) dynamic and a 'cresc.' marking. Measure 52 has a 'fz' marking. Measures 53-54 are quarter notes. A triplet of eighth notes is marked in measure 53.

55 **Poco più mosso**
(Option St. Bass)

Measures 55-61 of the 'Poco più mosso' section. Measures 55-58 are quarter notes. Measure 59 has a fortissimo (ff) dynamic. Measure 60 has a forte (f) dynamic. Measure 61 has a crescendo hairpin. A key signature change to E major (two sharps) occurs at measure 59.

62

Measures 62-66 of the 'Poco più mosso' section. Measures 62-65 are quarter notes. Measure 66 has a mezzo-piano (mp) dynamic and a 'play' marking. A crescendo hairpin is shown under measures 62-65.

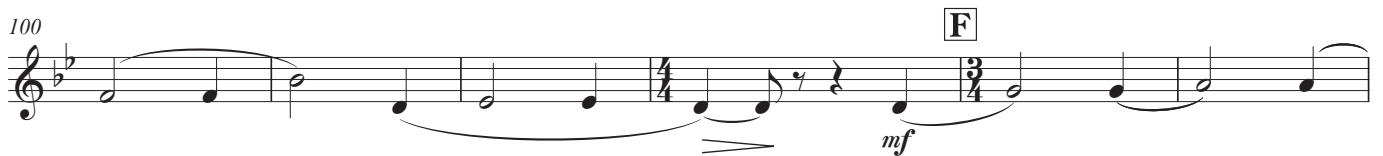
67

Measures 67-71 of the 'Poco più mosso' section. Measures 67-68 are quarter notes. Measure 69 has a forte (f) dynamic. Measures 70-71 are quarter notes. A crescendo hairpin is shown under measures 67-68.

72 **D**

Measures 72-76 of the 'Poco più mosso' section. Measures 72-75 are quarter notes. Measure 76 has a mezzo-piano (mp) dynamic. A key signature change to E major (two sharps) occurs at measure 72. A crescendo hairpin is shown under measures 72-75.

Tuba in E^b (Treble Clef)



Tuba in E^b (Treble Clef)

rit.
(Option St. Bass)

J **Espressivo** (♩=80)

134 *p* *play*

140 *p*

147 **K** *f* *mf*

153 *poco allarg.* **L** **Andante** (♩=88) *f* *ff*

159 *p*

165 *poco accel.* *♩=72* *f*

171 **M** *♩=144* *f* *mp*

178 *f*

186

194 **N** *sf* *sf*

202 *sf* *sf*

210 1. 2.

218 **O** 1 player *f* *mf* *tutti* *sf*

Tuba in E^b (Treble Clef)

226 1 player tutti 1 player tutti 1 player tutti

sf sf sf sf

234 *f* **P** 1 player *mf* *sf* tutti

242 1 player tutti 1 player tutti 1 player tutti

sf sf sf sf

250 *mf* *f* **Q** *f* *p* *3*

259

268 *f* *p* *p* *f* *p* *p*

276 *f*

284

292 **R** *sf sf*

300 *sf sf*

308 1. 2. **S** *sf sf* *f* *2*

317 *2*

326