

Tuba in B \flat (Bass Clef)

The Land of a Great Promise - CHINGIS KHAN

(small version)

Eiji Suzuki

Freely $\text{♩} = 60$ *accel.* Voiceless sound *sf* *a tempo* *pp*

"shi" *sec.*

6 *f* *p*

13 *f* *pp* 14 17 2 *Voice f ff* *gliss.* yo - ha!

20 3 *f* *ff* 25 *f* *f*

27 *f* *f* *f* *f* *f* *mf*

33 March Tempo $\text{♩} = 132$ 13 47 6 53 10

63 (opt. St.Bass) *p*

71 73

79 83 play *f*

85

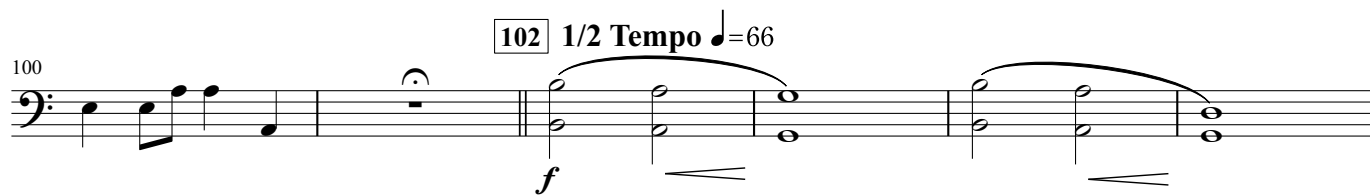
90 93

Tuba in B♭ (Bass Clef)

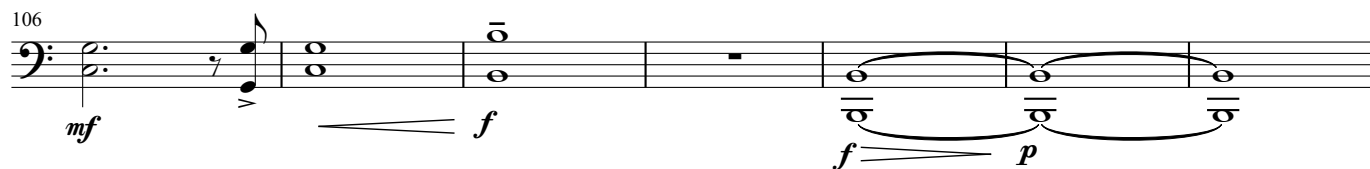
95



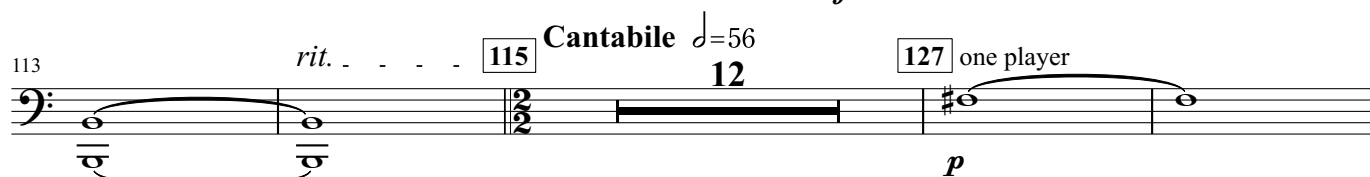
100



106



113



129



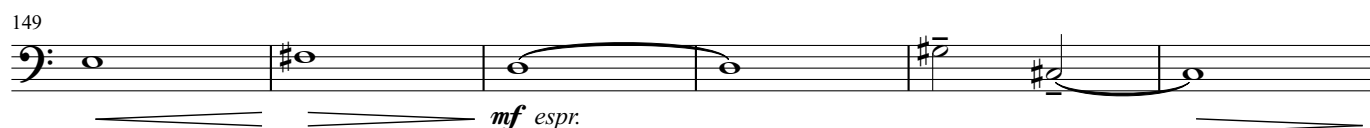
135



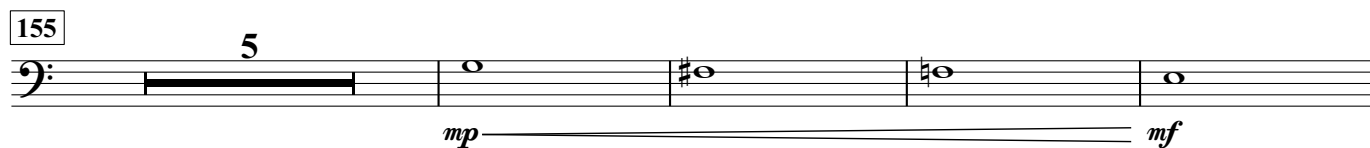
143



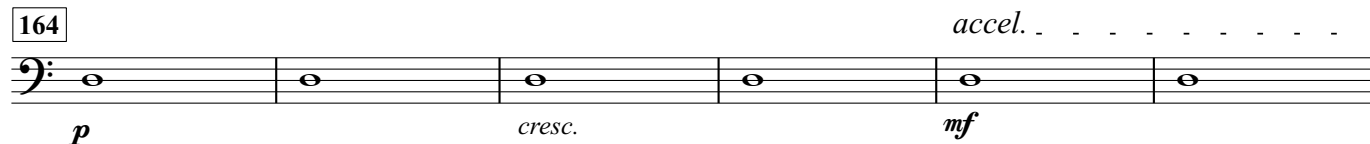
149



155



164



170



176

