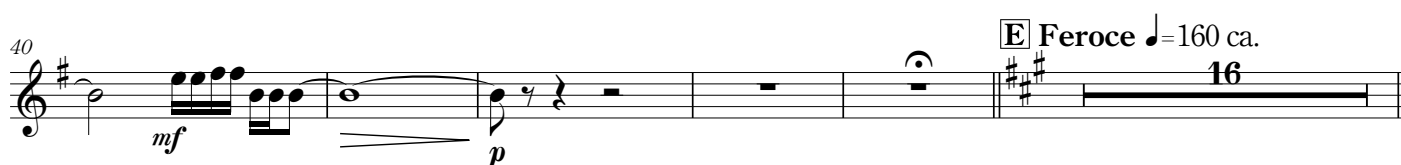
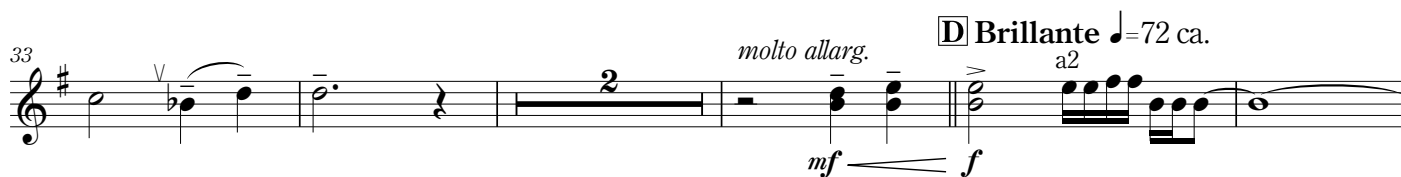
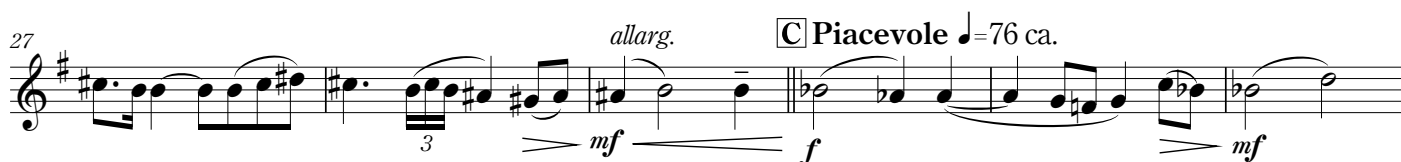
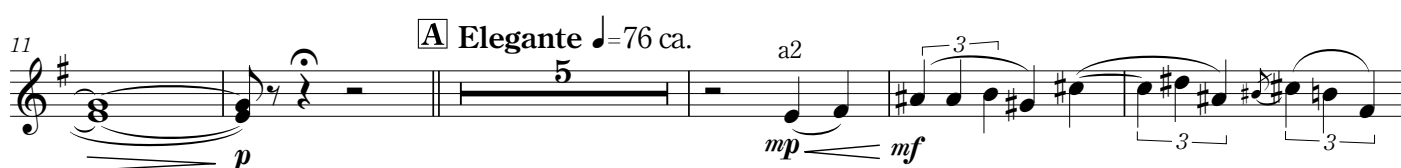
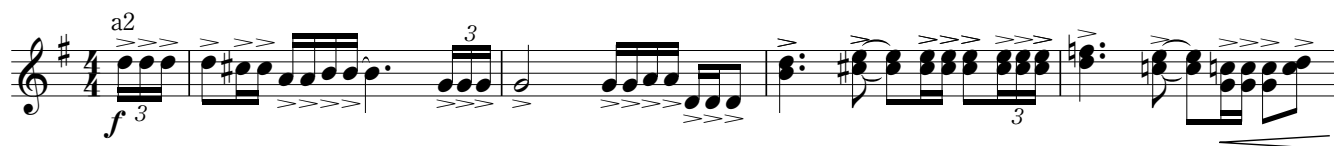


1st & 2nd Horns in E^b

Commissioned by the Ensemble Liberte Wind Orchestra Kawaguchi City, 2004
Machu Picchu : City in the Sky
 -The mystery of the hidden Sun Temple
 <2019 version>

Satoshi Yagisawa

Brillante ♩=72 ca.



1st & 2nd Horns in E^b

76 **G**

76-82: Musical staff with treble clef and key signature of two sharps (F# and C#). It begins with a whole rest, followed by a triplet of eighth notes (F#, G, A) marked *mf*. This is followed by a half note G (marked *a2*), another triplet of eighth notes (F#, G, A), and a half note G. The staff continues with a triplet of eighth notes (F#, G, A) marked *f*, followed by a half note F# marked *mf*, and ends with a triplet of eighth notes (F#, G, A) marked *f*.

83

83-87: Musical staff continuing from the previous one. It starts with a triplet of eighth notes (F#, G, A) marked *f*, followed by a half note G. There is a whole rest, then a half note G marked with an accent (^), followed by a half note F# and a whole rest. The staff ends with a triplet of eighth notes (F#, G, A) marked *f*.

88 **H**

88-92: Musical staff with treble clef and key signature of two sharps. It begins with a whole note F# marked *ff*, followed by a whole rest. The next measure is a whole note F# marked *sfz*. This is followed by a whole note G marked *mf*, then a triplet of eighth notes (F#, G, A) marked *f*, and ends with a triplet of eighth notes (F#, G, A) marked *mf marc.*

93

93-96: Musical staff with treble clef and key signature of two sharps. It consists of four measures, each containing a triplet of eighth notes (F#, G, A) marked *f*.

97 **I**

97-102: Musical staff with treble clef and key signature of two sharps. It begins with a half note F# marked *mf*, followed by a whole rest. The next measure is a whole note F# marked *mf*. This is followed by a triplet of eighth notes (F#, G, A) marked *f*, then a triplet of eighth notes (F#, G, A) marked *f*, and ends with a triplet of eighth notes (F#, G, A) marked *f*.

103 **J**

103-107: Musical staff with treble clef and key signature of two sharps. It begins with a whole rest, followed by a half note F# marked *f poco a poco cresc.*. This is followed by a half note G marked *f*, then a half note F# marked *f*, and ends with a half note F# marked *ff*.

108

108-112: Musical staff with treble clef and key signature of two sharps. It begins with a whole note F# marked *sfz*, followed by a whole note G marked *ff*. This is followed by a whole note F# marked *sfz*, then a whole note G marked *sfz*. The staff continues with a half note F# marked *ff*, followed by a half note G marked *ff*, and ends with a half note F# marked *ff*.

113 **K** Pesante $\text{♩} = 54 \text{ ca.}$

113-120: Musical staff with treble clef and key signature of two sharps. It begins with a whole rest, followed by a whole note F# marked *mp*. This is followed by a half note F# marked *mp*, then a half note G marked *mp*. The staff continues with a triplet of eighth notes (F#, G, A) marked *mp*, then a triplet of eighth notes (F#, G, A) marked *mp*, and ends with a triplet of eighth notes (F#, G, A) marked *mp*.

121 *molto allarg.*

121-124: Musical staff with treble clef and key signature of two sharps. It begins with a triplet of eighth notes (F#, G, A) marked *mf*, followed by a triplet of eighth notes (F#, G, A) marked *f*. This is followed by a triplet of eighth notes (F#, G, A) marked *f*, then a triplet of eighth notes (F#, G, A) marked *ff*, and ends with a triplet of eighth notes (F#, G, A) marked *ff*.

125 **L** Elegiaco $\text{♩} = 60 \text{ ca.}$ **M** **N** Feroce $\text{♩} = 160 \text{ ca.}$

125-127: Musical staff with treble clef and key signature of two sharps. It begins with a whole note F# marked *fff*, followed by a whole rest. The next measure is a whole note F# marked *fff*. This is followed by a whole note G marked *fff*, then a whole note F# marked *fff*, and ends with a whole note F# marked *fff*.

1st & 2nd Horns in E^b

144

mf *a2* *3* *3* *3* *f* *mf* *3*

148

f *3* *3* *3* *3* *3* *3* *3*

153

ff *3* *3* *3* *3* *3* *3* *3*

159

sfz *f* *3* *3* *3* *3* *3* *3*

164

sfz *3* *3* *3* *3* *3* *3* *3*

169

sfz *mf* *3* *3* *3* *3* *3* *3*

178

mp *3* *3* *3* *3* *3* *3* *3*

184

f *a2* *3* *3* *3* *3* *3* *3*

1st & 2nd Horns in E^b

190 R

195

201 *allarg.* S Grandioso ♩=72 ca.

206 *allarg.*

212 T A tempo, espressivo *a2* *allarg.* U A tempo, grandioso

222 *a2* *allarg.*

228 V A tempo, brillante

234 *a2* *molto allarg.*