

B $\flat$  Trombone 1  
(T. C. )

commissioned by Chiba Nihon University Daiichi Junior and Senior High School Wind Ensemble

# Scènes de Ballet

Alexander Glazunov  
arr.by Makoto Onodera

## I. Prélude

**Allegro** ♩ = 144 ca.

Measures 1-9 of the Prélude section. The key signature is B-flat major (two flats). The time signature is 12/8. Measure 1 contains a whole note chord (F2, B-flat1, D2, F2). Measures 2-9 feature a melodic line starting on G2, moving stepwise up to G3, with various dynamics including piano (p) and accents.

**A** ♩ = 80 ca.

Measures 10-17 of section A. The time signature changes to 2/2. The tempo is marked as 80 ca. The music features a rhythmic pattern of eighth notes and quarter notes, with dynamics ranging from forte (f) to mezzo-forte (mf) and mezzo-piano (mp).

## B Alla breve

Measures 18-25 of section B. The time signature is 2/4. The tempo is marked as Alla breve. The music is characterized by a fast, rhythmic pattern of eighth notes, with dynamics including fortissimo (ff), forte (f), and mezzo-forte (mf).

## C

Measures 26-29 of section C. The time signature is 3/8. The music features a melodic line with a forte (f) dynamic and a final fortissimo (ff) dynamic.

## II. Marionnettes

**D Allegro** ♩ = 60-66 ca.

Measures 30-33 of section D. The time signature is 3/8. The tempo is marked as Allegro (60-66 ca.). The music features a melodic line with a forte (f) dynamic and a final fortissimo (ff) dynamic.

## E

Measures 34-58 of section E. The time signature is 3/8. The music features a melodic line with a forte (f) dynamic and a final fortissimo (ff) dynamic.

## F

## G

Measures 59-88 of section F. The time signature is 3/8. The music features a melodic line with a forte (f) dynamic and a final fortissimo (ff) dynamic.

## H

Measures 89-90 of section H. The time signature is 3/8. The music features a melodic line with a forte (f) dynamic and a final fortissimo (ff) dynamic.

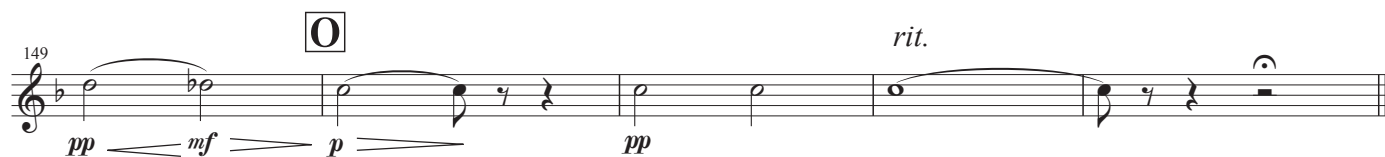
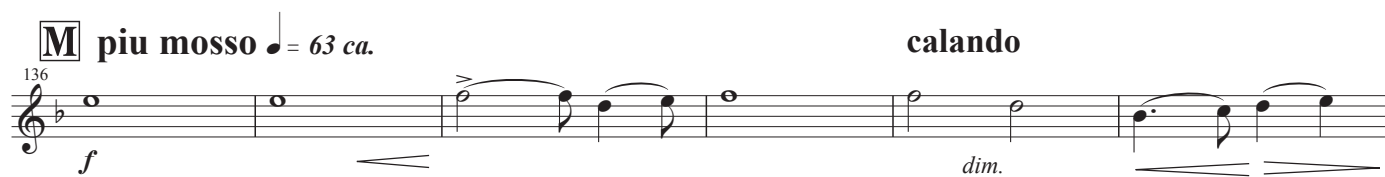
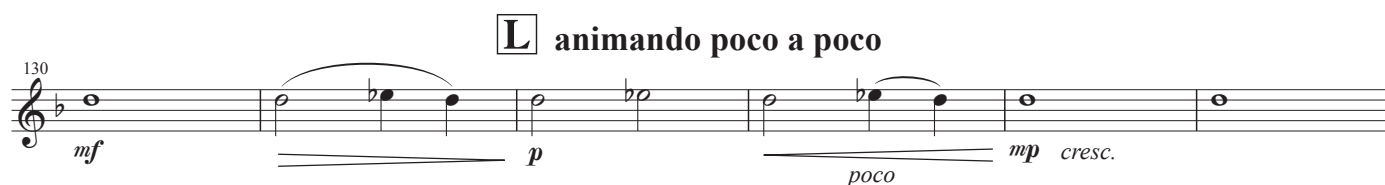
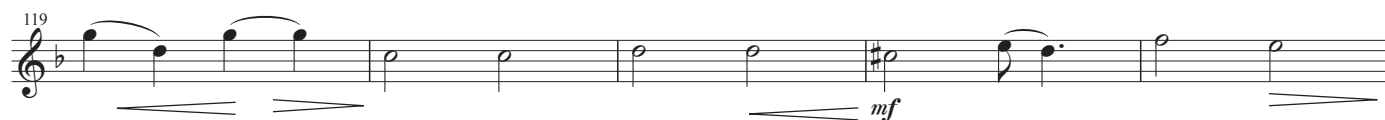
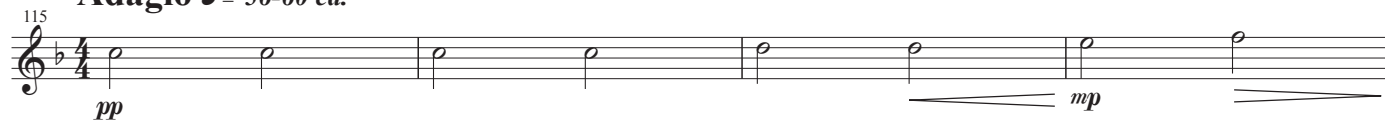
(poco rit.)

**I** (a tempo)

B $\flat$  Trombone 1  
(T. C. )

**V. Pas d'Action**

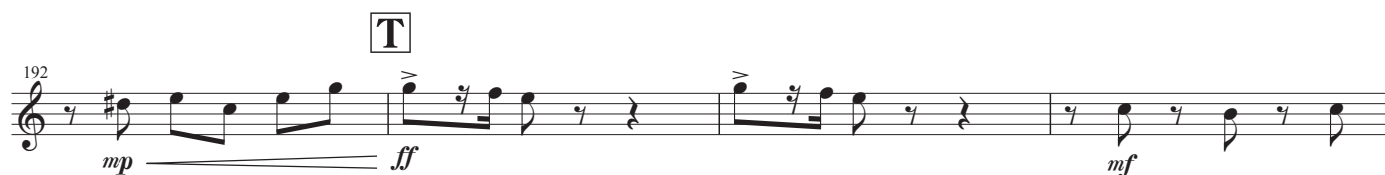
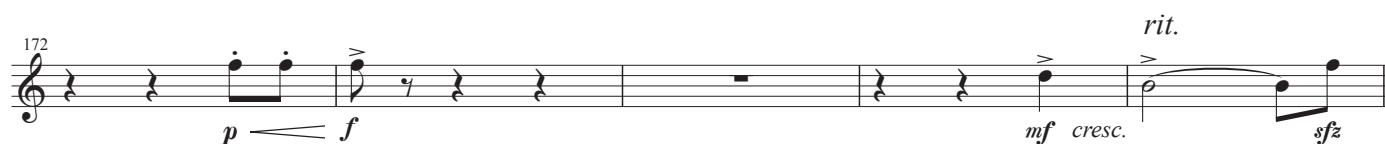
**Adagio** ♩ = 56-60 ca.



B $\flat$  Trombone 1  
(T. C. )

**VIII. Polonaise**

**Moderato** ♩ = 104-108 ca.



B $\flat$  Trombone 1  
(T. C. )

205 V

*f* *sfz* *mf*

210 *f* *mf*

214 W

*f* *sfz* *mf* *ff*

219 *sfz* *mf* *ff* *sfz* *poco a poco accel.*

X Y *piu mosso* ♩ = 112 ca.

223 *pp cresc.* *f* *mf marcato*

*poco a poco accel.*

228 *f* *mf* *fp cresc.*

Z *Allegretto* ♩ = 120 ca.

232 *sfz* *ff*

237 *p cresc.* *ff* *p cresc.* *ff*

242