

Tuba (Div.) in B^b (B. C.)

東大阪市立石切中学校吹奏楽部委嘱作品

布都御魂之剣

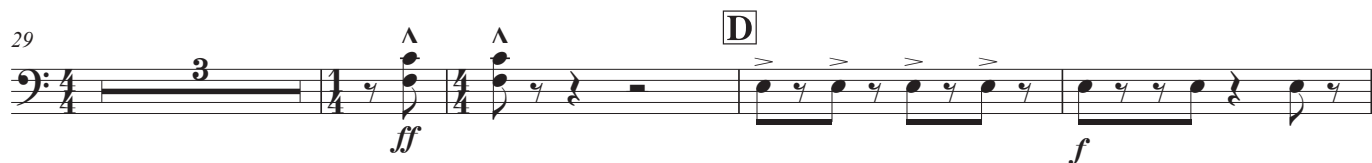
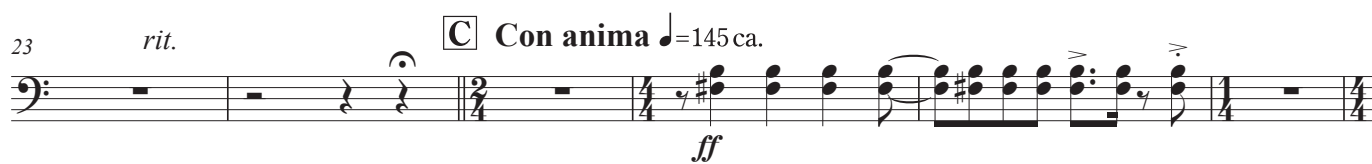
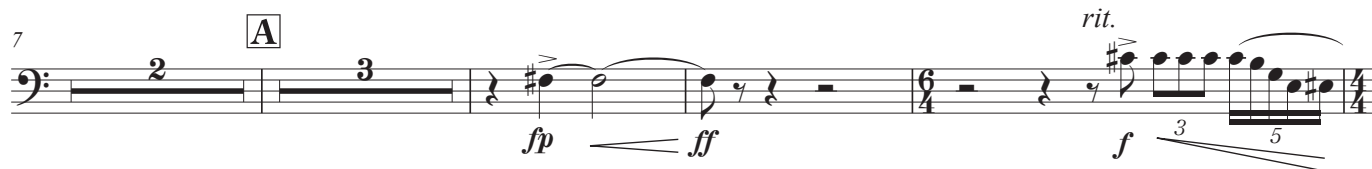
～打楽器群と吹奏楽のための神話～

The Sacred Sword

片岡寛晶 作曲

Hiroaki Kataoka (2019/2021)

Adagietto ♩=75 ca.



Tuba (Div.) in B^b (B. C.)

51 **G**

ff

3 7

64 **H**

f marcato

3 3 2

70 **I** *accel.* ♩=155 ca.

f ff mf

75

f

80 **J**

ff f

85

90 *molto rit.*

ff

95 **K** *Misterioso* ♩=60 ca. **L** *Tranquillo*

p

2 3

Tuba (Div.) in B \flat (B. C.)

104 *rit.* **M** **Adagietto** $\text{♩} = 75 \text{ ca.}$ *poco accel.* **N** *mf* *rit.* *mf*

116 **Con sentimento** $\text{♩} = 68 \text{ ca.}$

121 **O** **Meno mosso** **P** **Con anima** $\text{♩} = 145 \text{ ca.}$ **12** *ff*

138 **Q** **R** *mf* *f*

146 *ff marcato* **S** *f*

151

156 **T** *mf*

161 *stringendo* **U** *ff* *mf* *fp*

Tuba (Div.) in B^b (B. C.)

V Con energia ♩=160 ca.

166 

178 W

f *ff*

183

mf

189

mp *ff*

195 *accel.* Y ♩ = 170 ca.

mp cresc. ----- *fff*

The musical score for measures 195-200 is written on a single staff with a bass clef and a key signature of one flat. Measure 195 begins with a half note G2, followed by quarter notes A2, Bb2, and C3. The next measure contains beamed eighth notes G2-A2, Bb2-C3, and D3-E3. This is followed by a measure with a half note D3, a quarter rest, and a half note C3. The next measure has beamed eighth notes Bb2-C3, A2-Bb2, and G2-A2. This is followed by a measure with a half note G2, a quarter note F2, and a half note E2. The next measure has beamed eighth notes D2-E2, C2-D2, and Bb1-C2. The final measure of the piece is a whole rest. Above the staff, 'accel.' is written above the first measure, and a boxed 'Y' followed by '♩ = 170 ca.' is above the final measure. Below the staff, 'mp cresc.' is written under the first measure, and 'fff' is written under the final measure, with a dashed line connecting them. A 4-measure rest is indicated at the end of the staff.

203 **Z**

f marcato *ff*

207 *molto rit.* **Pesante** ♩ = 85 ca. IYO-! (shout)