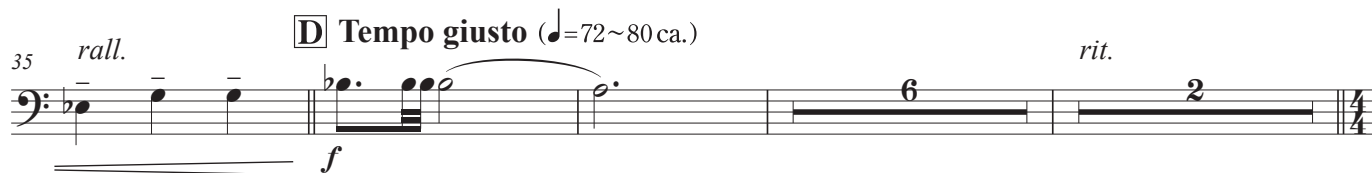
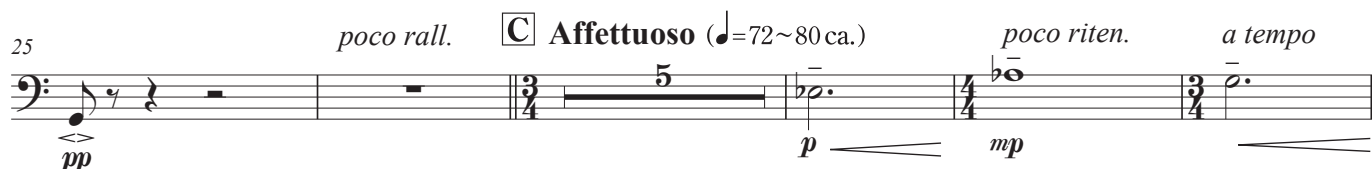


2nd Trombone in B^b Commissioned by Nakayama Satsukidai Junior High School Band, Takarazuka City
(Bass Clef)

Gratias Cantare

田村修平 作曲
Shuhei TAMURA (2020)

Allegro ma non troppo (♩=120 ca.)



2nd Trombone in B^b (Bass Clef)

62 (...♩=100 ca.) *rall.* **G** **Allegro** (♩=126 ca.)

f *ff* *mf*

67 *fp* *ff* *mp* *mf* *f*

72 *mp* *cresc.*

77 **H** **Agitato** (♩=132 ca.)

ff *ff*

85 **I** *molto riten.*

ff

90 **J** *a tempo* **K**

ff

96 **L**

mp *f*

102 **M** *string.*

ff *mp* *cresc.*

107 *molto rall.*

ff *ff* *mf* *cresc.* *ff*

2nd Trombone in B^b (Bass Clef)

112 **G.P.** **N Cantabile** (♩=58~63 ca.) *allarg.*

mf marcato

123 **O Poco con brio** (♩=66~72 ca.) *poco rit.*

f *mf*

129 *a tempo* **P**

ff *mp*

135 *cresc.*

140 *rall.* **Q molto stringendo** (♩=40 ca. ~) *poco rall.*

f *mp* *cresc.* *f*

146 **R Cantabile con brio** (♩=69~72 ca.)

ff

151 *poco rit.* **S Brillante** (♩=72~80 ca.)

f *ff* *f marcato*

156 *poco riten.*

mf *ff*

161 *allarg.* **T Maestoso** (♩=66 ca.)

f *ff* *f*

166 *rall.* *meno mosso*

ff *p* *fff*