

Tuba in E \flat (Treble Clef)
(Water Whistle)

生命のアマナ

～ウインド・アンサンブルのために～

Amana ~Energy of Life~

片岡寛晶 作曲

Hiroaki Kataoka (2020 / 2021)

Passionato ♩=80 ca. *accel.* ♩=140 ca. **A** ♩=100 ca.

6 *rit.* **B Elegiaco** ♩=80 ca. *mf* *f*

13 *accel.* **C** ♩=90 ca. *mp* *cresc.* *f*

19 *rit.* **D Free Tempo** *mp* *cresc.* *ff*

25 **E Grave** ♩=108 ca. *rit.* **F Con moto** ♩=150 ca. *ff* *mf*

32 *f* *mp*

36 *cresc.* *ff*

41 **G** *mf*

45

49 *cresc.*

Tuba in E^b (Treble Clef)

53 **H**

mf

mf

Detailed description: This image shows measures 53 and 54 of a musical score for Horn 1. Measure 53 begins with a treble clef, a key signature of one sharp (F#), and a common time signature (C). The melody starts with a quarter rest, followed by a half note G4, a quarter note A4, and a quarter note B4. A slur covers a half note C5 and a quarter note B4. The measure ends with a quarter note A4. Measure 54 is in 3/4 time. It begins with a quarter note G4, followed by a quarter note F#4, and a half note E4. A slur covers a half note D4 and a quarter note C4. The measure ends with a quarter note B3. The dynamic marking 'mf' (mezzo-forte) is present at the beginning of measure 53 and at the end of measure 54.

58

cresc. *ff*

[illegible]

72 **J**

76 **K** **Risolute**

f *mf* *mp* *cresc.* -----

87 **L** Con brio

p *ff*

92

mf

f

mp

96 **M**

cresc. -----

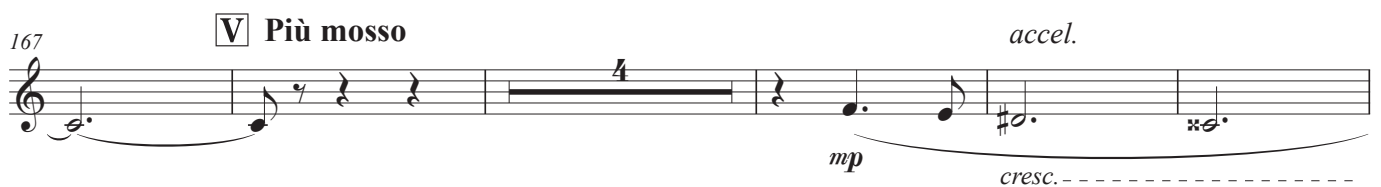
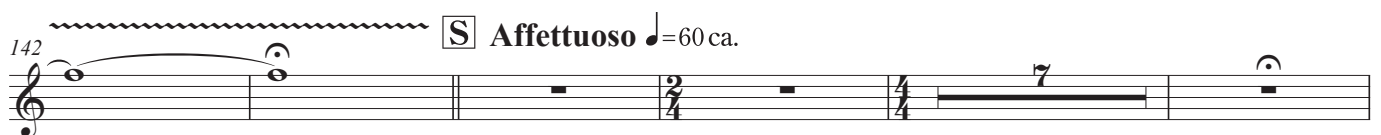
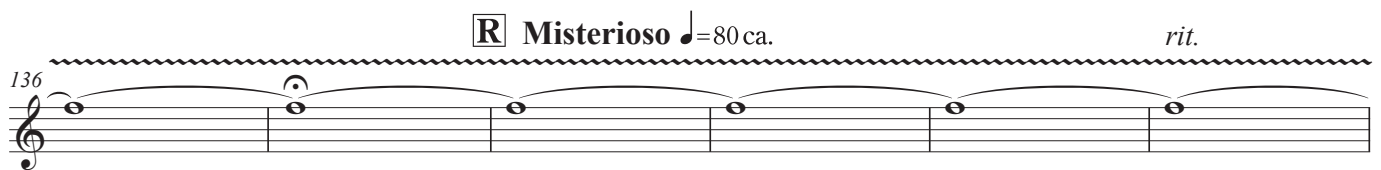
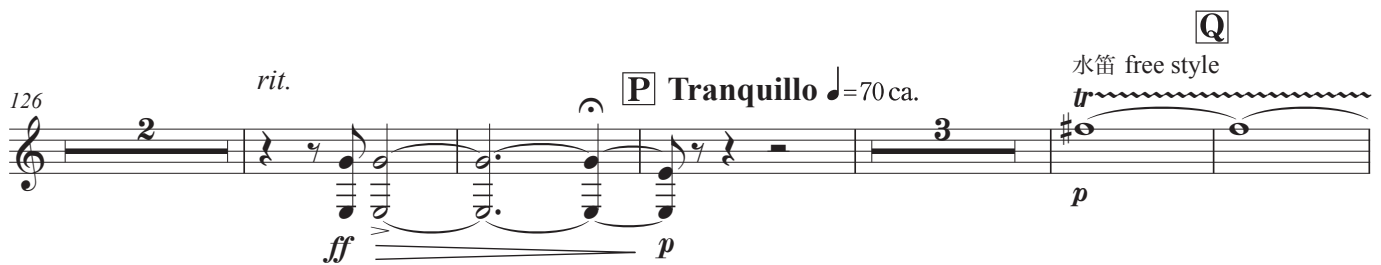
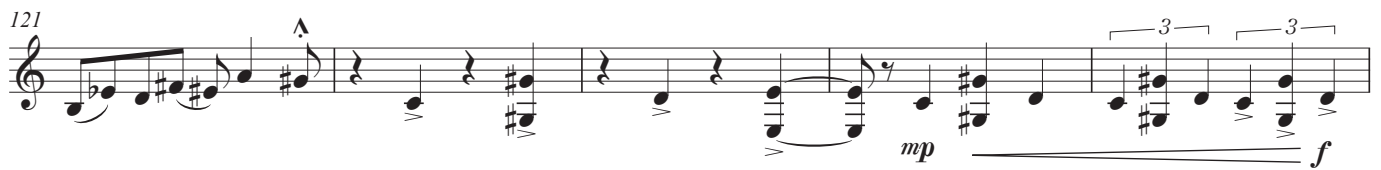
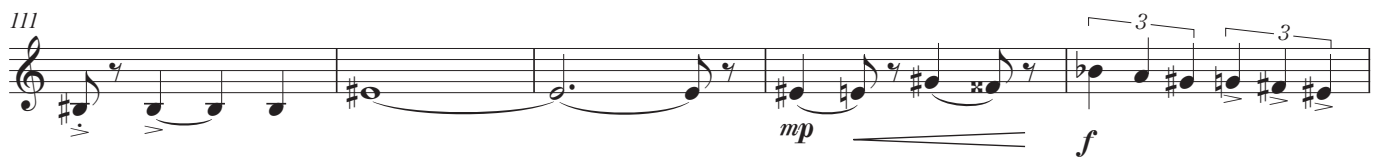
101

Example 101

106

N

Tuba in E^b (Treble Clef)



Tuba in E^b (Treble Clef)

176 *molto rit.* **W** **Brillante** ♩=80 ca. *ff*

181 *rit.* **X** ♩=108 ca. *mf* *cresc.*

186 *rit.* **Y** **Tranquillo** ♩=80 ca. *ff* *f* *mp* *Optional Solo - one player*

191 **Z** ♩=160 ca. *mf* *f* *mp* *cresc.*

196 *accel.* *ff* *fp* *cresc.*

202 **A****A** **Con energia** ♩=170 ca. *f*

207 **B****B** *cresc.* *ff* *f* *marcato*

212 **C****C** **Energico** ♩=85 ca. *ffp* *f* *marcato*

218 *rit.* ♩=70 ca. *molto rit.* *f* *ff* *f* *fff*