

Tuba in B^b
(Treble Clef)

群馬県立桐生高等学校吹奏楽部委嘱作品

風の旅 (小編成版)

Wind Journey (Reduced Instrumentation)

福島弘和 作曲

Hirokazu Fukushima (2021)

♩ = 72 ca.

p

6 **A**

12 *mp* *cresc.* *f*

18 **B** **C** *mp* *mf*

32 *rit.* **D** ♩ = 72 ca. *accel.* *mp* *mf* *p*

38 **E** ♩ = 86 ca. *accel.* *p* *mp*

44 **F** ♩ = 96 ca.

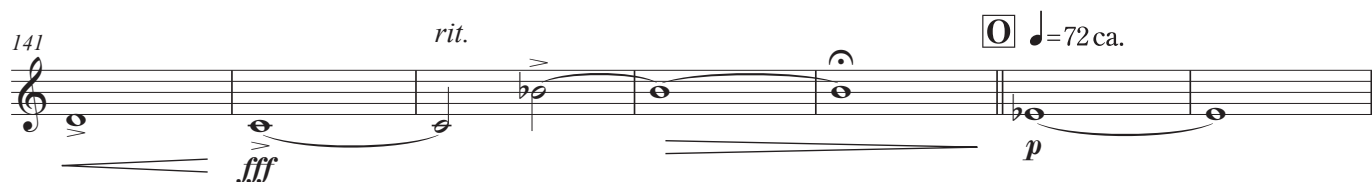
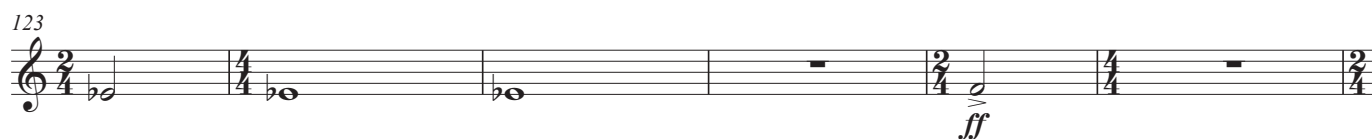
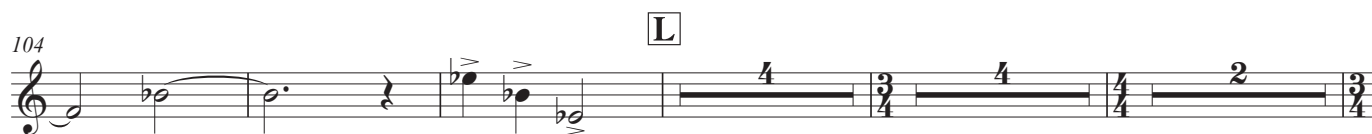
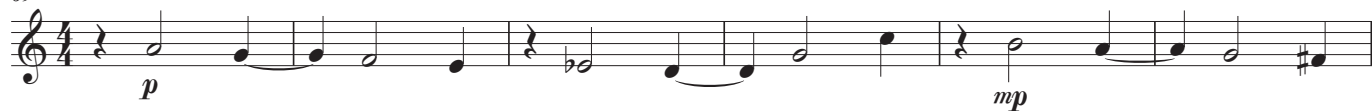
50 *accel.* **G** ♩ = 106 ca. *mf* *f* *p*

56 *f* *p* *mf* *mf* *f*

63 *rit.*

Tuba in B^b (Treble Clef)

69 **H** ♩=144 ca.



Tuba in B^b (Treble Clef)

148

155

P *accel. molto*

162

Q ♩ = 152 ca.

169

176

R

182

188

S

195

T

201

207