

3rd Trombone in B $\flat$   
(Bass Clef)

横浜市立保土ヶ谷中学校吹奏楽部委嘱作品

さいほう

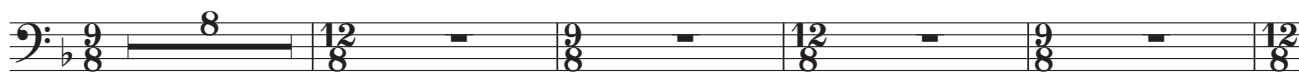
再逢の空へ

Reuniting Sky

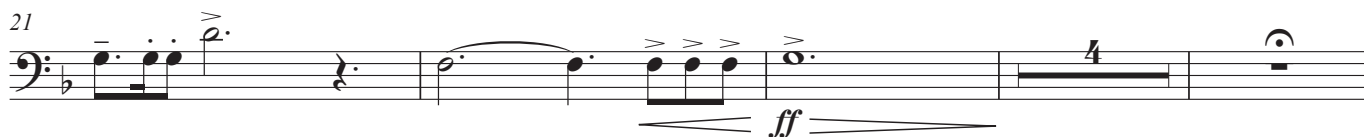
芳賀傑

Takashi HAGA (2020)

Misterioso  $\text{♩} = 50$



13 **A** *pìu mosso*



29 **C** *Con moto*  $\text{♩} = 100$  ca.



33 **D** *Grandioso*



# 3rd Trombone in B<sup>b</sup> (Bass Clef)

60 **F**

*mf*

64 *allargando.....*

*f*

66 **G** Tempo I

*f*

70

*mf*

74

*f*

80 **H** Con brio ♩ = 152 ca.

*f*

84

*mp*

94

*mf*

98 Senza sord.

*mf*

106 **I** **J**

*f*

129 **K**

*f*

3rd Trombone in B $\flat$  (Bass Clef)

139

*mf* *mp*

144

149

154

*cresc.*

159

*f* *mp*

**L** *poco a poco rit.* **Moderato** ♩=72 ca.

166

*mp*

**M**

173

*mp*

**N**

180

*mf cresc.*

**O**

192

*f*

**P**

197

*f*

202

*f*

207

*sf* *sf*

# 3rd Trombone in B<sup>b</sup> (Bass Clef)

**Q** Con brio ♩=152 ca.

211 *sf* *mp* **2**

218 **R**

226 *mf*

232 **S** *f*

237

242 **T**

247 *f* *allargando.....* **12/8**

252 **U** Tempo I *ff*

256 *ff* **Presto**

260 *fff*

264 *ffpp* *fff*