

Euphonium (div.) in B^b
(B. C.)

Commissioned by Tokyo Ryusei Wind Orchestra

Septuplum Metrum

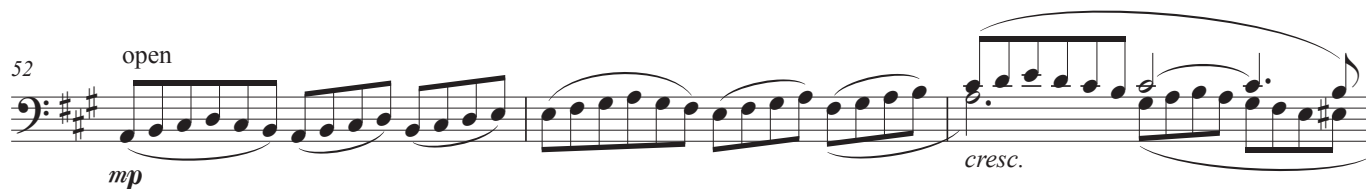
I

Chang Su KOH (2021)

Andante ♩ = 66 ca.

10 Allegretto ♩ = 114 ca.

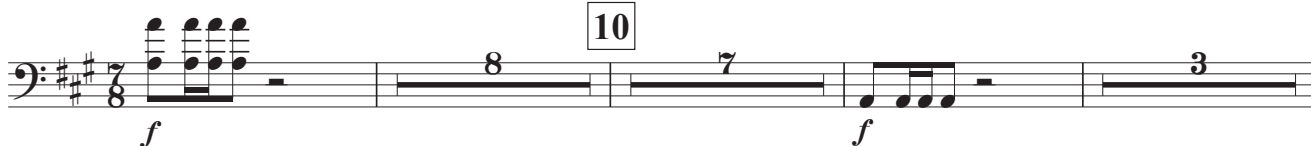
20



II

Prestissimo ♩ = 168 ca.

10



Euphonium (div.) in B \flat (B. C.)

31 34

36

41 43 51 60
8 9 *mf*

62

67

72 76
4 3 *f* *f*

82 *cresc.*

87 91 107
16 6 *ff*

113 *f cresc.*

118 119
ff

Euphonium (div.) in B^b (B. C.)

123 *molto allarg.* - - - - -

ff

130 **130** *a tempo* **139**

ff *f*

145

150 **154**

f

162 **166** *molto allarg.* - - - - -

mf *cresc.*

168

f cresc.

174

ff

177

ff cresc.

Andante *molto allarg.* - - - **182** **Tempo I**

♩ = 66 ca.

fff *ff*

187

191 *a tempo*

> p ff