

3rd & 4th Trombones  
in B<sup>b</sup> (B. C.)

Commissioned by Panasonic Eco Solutions Symphonic Band

**SUITE NO. 2 - IL FILATO -**

for Wind Orchestra

Chang Su KOH (2018)

**I**

**Energico** ♩=120 ca.

6

12 **12** *ff* *poco a poco rit.* - - - - - 5

21 - - - - - **25** **Andante doloroso** ♩=66 ca. *rit.* - - - - -

41 **41** **più mosso** ♩=72 ca. *Cup Mute* *p* 6

51 *sf* *open* *ff* **54** **Pesante** ♩=60 ca. *mf*

57 *poco a poco cresc.*

64 **64** **Doppio movimento** ♩=120 ca. *molto allarg.* - - - - -

70 **Andante doloroso** ♩=66 ca. *ff* *dim.* *mp*

3rd & 4th Trombones in B<sup>b</sup> (B. C.)

76 *rit.* - - - - - **79** **Allegretto** ♩=90 ca. *f* *cresc.*

94 *f* *cresc.*

100 *rit.* - - - - - **Andante** ♩=66 ca.

**II**

**Andantino** ♩=72 ca.

*rit.* - **12** **Lento** ♩=54 ca. **20**

*p* *cresc.*

*agitato* - - - - -

22 *mp* *cresc.* *mf* *cresc.* *f* *cresc.*

- - - - - *allarg.* - - - - - *poco* *a tempo* ♩=54 ca. **Tempo I** ♩=72 ca.

27 *ff* *mf*

33 **33** *rit.* - - - - - **48** **Lento** ♩=54 ca. **56** **Tempo I** ♩=72 ca.

66 **66** **Con moto**

*f* *cresc.* *allarg.* - - - - -

76 *ff*

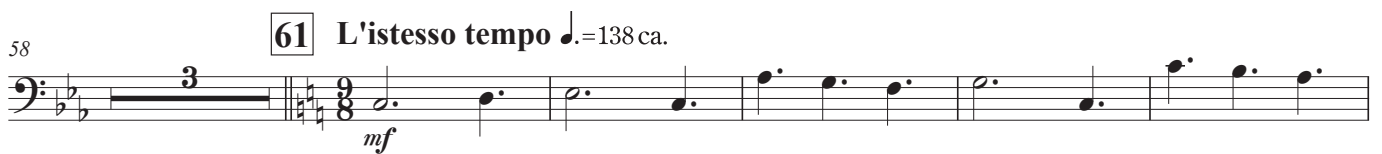
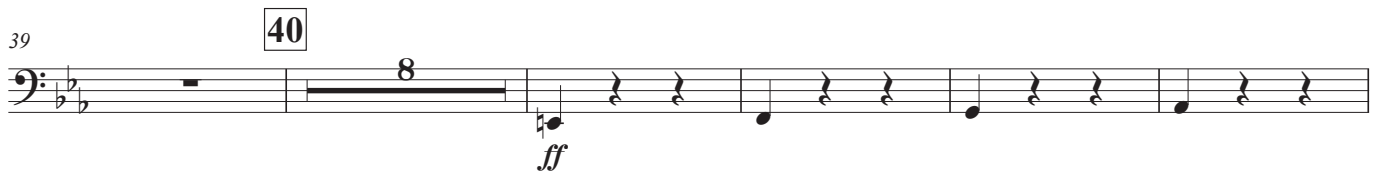
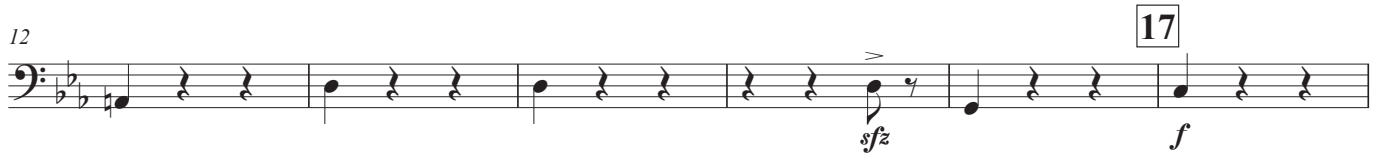
**81** **Pesante**

81 *rit. al fine* - - - - -

3rd & 4th Trombones in B<sup>b</sup> (B. C.)

III

Minuetto  $\text{♩} = 138 \text{ ca.}$



3rd & 4th Trombones in B<sup>b</sup> (B. C.)

75

77

89



91



100

*rit.*

111

(♩ = ♩.)

**Lento**



118

**Tempo I** ♩ = 138 ca.



124

127



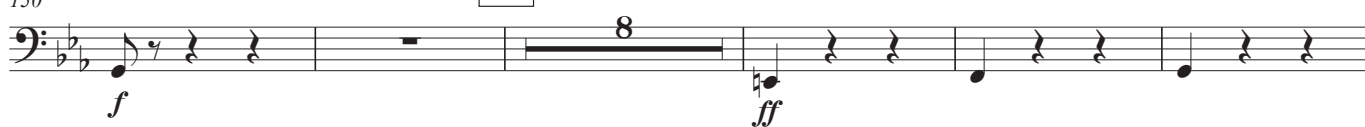
130

140



150

152



163

*rit.*



169

171

**Andante**

*molto allarg.*

**attacca**



3rd & 4th Trombones in B $\flat$  (B. C.)

IV

Allegro vivace  $\text{♩} = 138 \text{ ca.}$

*f*

5 *sfp* *p*

11 *ff*

14 8 22 4

26 *f*

30 30 8 *mf* *4th* *mf*

42 45

48 Mute *f*

56 56 3 *3rd & 4th open* *ff*

62 *ff* *sffz* 65 81 16 17

3rd & 4th Trombones in B<sup>b</sup> (B. C.)

98 **98**

*f*

109 **110**

*mf*

120 **124** *rit.*

126  $\text{♩} = 102 \text{ ca.}$

*cresc.*

*allarg.*

131 *f* *cresc.* *ff* 3rd & 4th

**137** **Largamente**  $\text{♩} = 66 \text{ ca.}$

136 *fff*

*molto allarg.*

142 **146** **Tempo I**  $\text{♩} = 138 \text{ ca.}$  *ff*

147 *sfp*

152 *p* *ff*

**Largamente**  $\text{♩} = 66 \text{ ca.}$

157 *sub. p* *ff*