

1st Trombone in B^b
(B. C.)

Trièdre
I. Prélude

Masamicz Amano (2022)

$\text{♩} = 96 \text{ ca.}$

f

6

A

13

19

B

mp *mf*

28

C

p *mp*

34

D

f

40

3

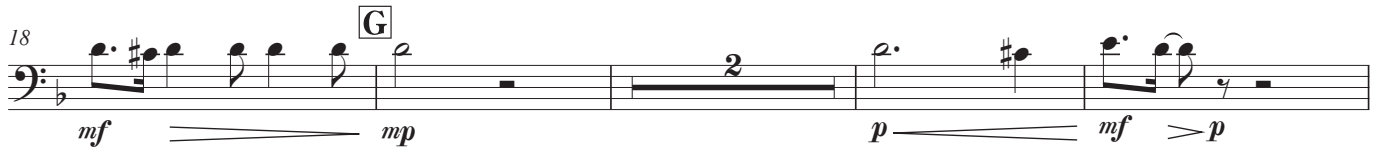
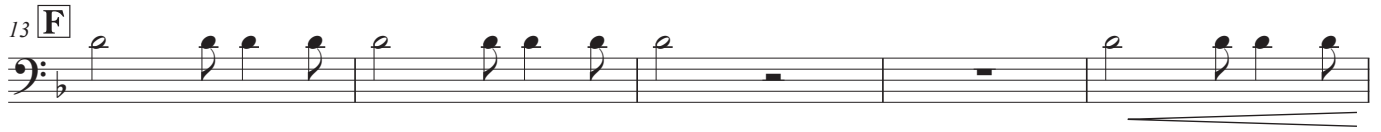
1st Trombone in B^b (B. C.)

II. Interlude

♩ = 66 ca.

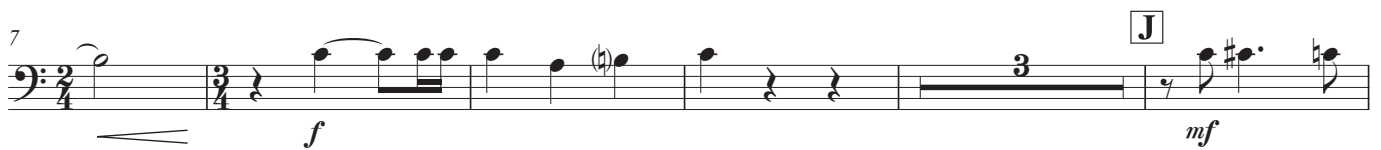
poco rit. a tempo

E



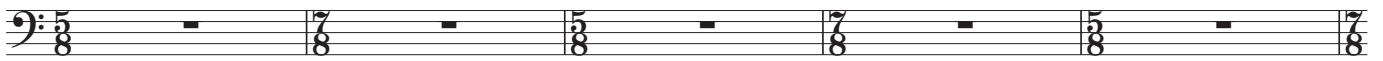
III. Finale

♩ = 144~152

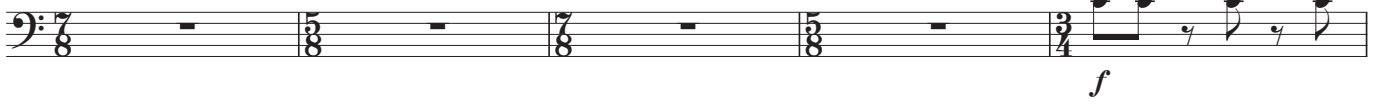


1st Trombone in B \flat (B. C.)



1st Trombone in B^b (B. C.)

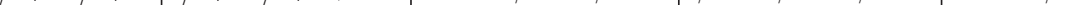
S



100

Example 100

T

105  3rd. Hm.

110

Example 110

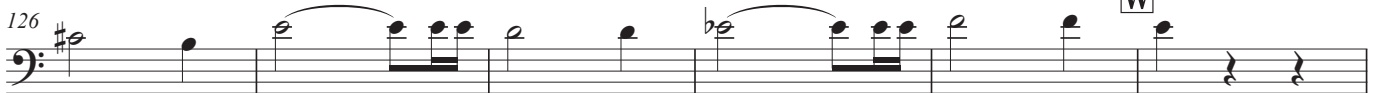
U



V



W



X



142

The musical score for the bass line of 'The Rose Tree' is written on a single staff. It begins with a bass clef and a key signature of one flat (B-flat). The tempo is marked 'Allegretto' and the time signature is 3/4. The score is divided into three measures. The first measure contains a half note G2 and a quarter note G2, with a forte (ff) dynamic marking. The second measure contains a half note F2 and a quarter note F2, with a piano (fp) dynamic marking. The third measure contains a half note E2 and a quarter note E2, with a forte (ff) dynamic marking. The piece ends with a double bar line.