

Tuba in E^b
(T. C.)

Sopron 1989
ショプロン 1989
—国境を駆け抜けた自由の民—

Souhei Kano (2022)

♩=66

mp

rit.

9 [1] *a tempo*

p *mf* *p* *mf* *p*

[2] ♩=176

17

♩=72 [3]

f *sfp* *ff*

29 *rit.*

[4] ♩=160

ff

35

[5]

ff

44

[6]

sfp *fff* *ff*

51

mp

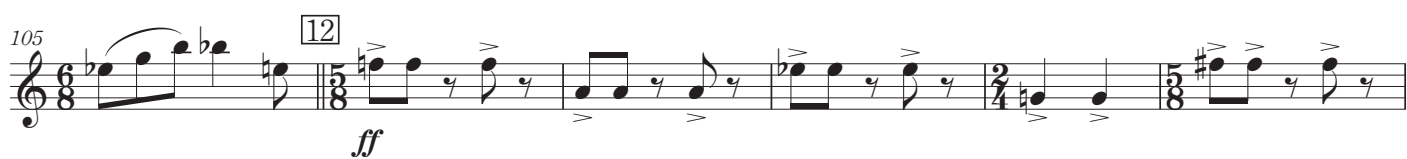
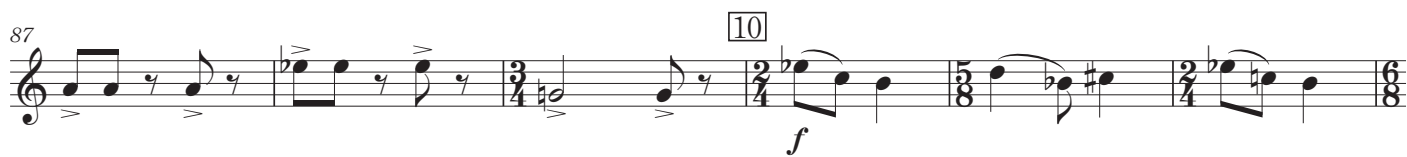
57

[7]

f *ff*

Tuba in E^b (T. C.)

8 ♩ = 180 ca.



Tuba in E^b (T. C.)

118 14

f

124

ff

130 15 16 ♩ = 54

mf *f* *ff* *pp* *mp*

137 17 ♩ = 63 *rit.*

f *pp* *mp* *f* *p*

144 *mf* *p* *mf* *mp* *mf*

mf *p* *mf* *mp* *mf*

150 *rit.* *a tempo* *rit.* 18 ♩ = 114

f *p*

157 19

f *cresc.* *ff* *mp*

167 20

f

175

183 21

192 22 ♩ = 188 *mp* *mf*

mp *mf*

201 23

Tuba in E^b (T. C.)

209 24 25

f *mf* *mf*

220 26

f

229 27

ff *mf*

239 28 (♩=♩)

ff

246

251 29

258 30 ♩=69 ca.

f *ff* *mf* *ff*

266 31

mf *f* *ff* *mf* *ff* *rit.*

273 32 ♩=160

p

279 33

cresc. *mf* *mp* *cresc.* *f* *mp*

286 34

cresc. *ff*

fff *ff* *fff*