

1st Trombone in B $\flat$   
(B. C.)

川勝和哉ファミリーウインドオーケストラ委嘱作品

シンフォニエッタ第一番「大地の詩」  
うた

Sinfonietta No.1 "Poem of the Earth"

福島弘和 作曲

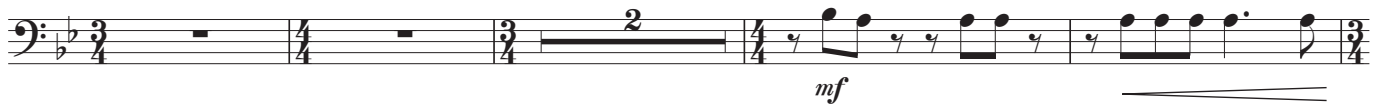
Hirokazu Fukushima

Grave (♩=76)

The musical score for the 1st Trombone in B-flat part of "Sinfonietta No.1 'Poem of the Earth'" by Hirokazu Fukushima. The score is written in bass clef with a key signature of two flats (B-flat and E-flat) and a 4/4 time signature. It begins with a "Grave" tempo marking and a metronome indication of ♩=76. The first staff (measures 1-5) starts with a whole rest followed by a half note G2, a half note F2, and a half note E2. The second staff (measures 6-11) begins with a half note D2, followed by a half note C2, and then a half note B1. The third staff (measures 12-16) continues with a half note A1, a half note G1, and a half note F1. The fourth staff (measures 17-21) starts with a half note E1, followed by a half note D1, and then a half note C1. The fifth staff (measures 22-25) begins with a half note B1, followed by a half note A1, and then a half note G1. The sixth staff (measures 26-34) starts with a half note F1, followed by a half note E1, and then a half note D1. The seventh staff (measures 35-39) begins with a half note C1, followed by a half note B1, and then a half note A1. The eighth staff (measures 40-48) starts with a half note G1, followed by a half note F1, and then a half note E1. The ninth staff (measures 49-50) begins with a half note D1, followed by a half note C1, and then a half note B1. The score includes various dynamics such as *f*, *mp*, and *ff*, and features section markers A, B, C, D, E, and F. The tempo changes from Grave to Allegro con moto (♩=132) at measure 26. The score also includes a "rit." marking at measure 26 and a "ff" marking at measure 22.

1st Trombone in B $\flat$  (B. C.)

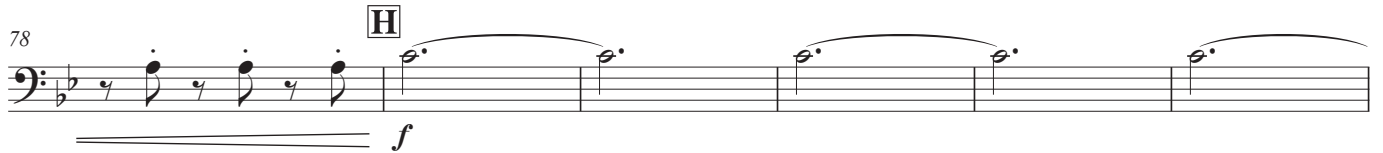
57



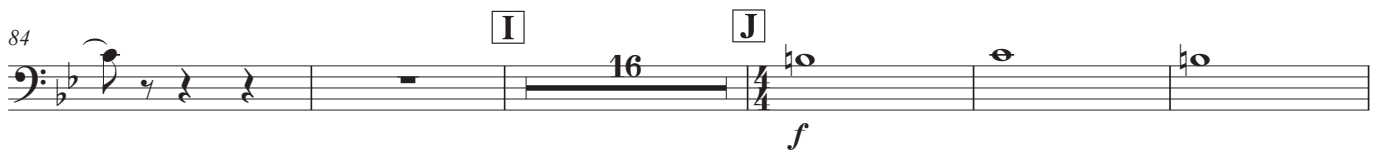
63 **G**



78



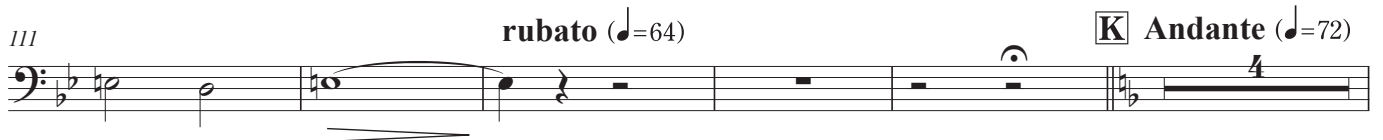
84



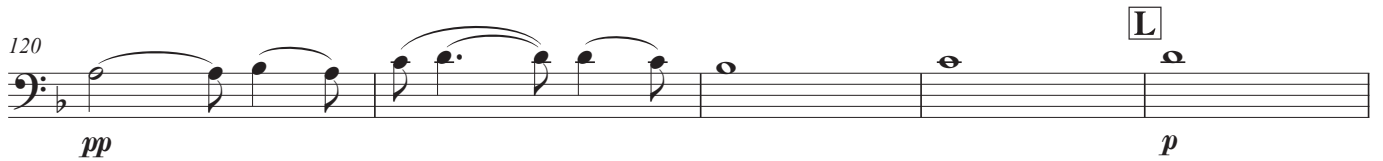
105



111



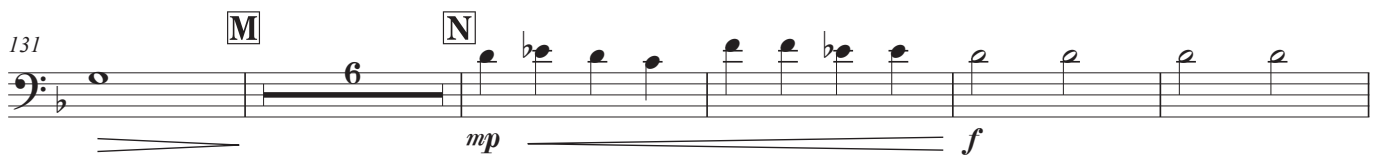
120



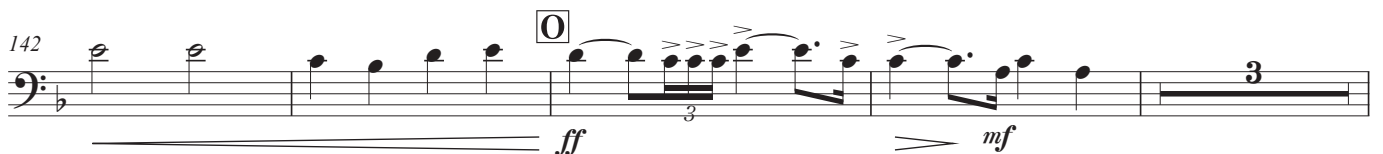
125



131



142



1st Trombone in B $\flat$  (B. C.)

**P** Moderato con moto (♩=86)

149 *rit.*

*mp* < *f* *mf*

153

*f* *mp*

158

*f*

163 **R** Allegro Vivo ♩=♩ (♩=172)

*fp* < *mf*

169

*mf* *f*

174 **S**

*mp*

179

*f*

184

*mp*

189 **T**

*f*

194 **U** **V**

*mf*

210

*mf*

1st Trombone in B $\flat$  (B. C.)

215

220

W

*f*

226

X

232

rit.

*f*

239

Y

Maestoso (♩=80)

*ff*

243

accel.

*mf*

251

Z

Allegro Vivo (♩=172)

*ff*

256

261

A A

266

272