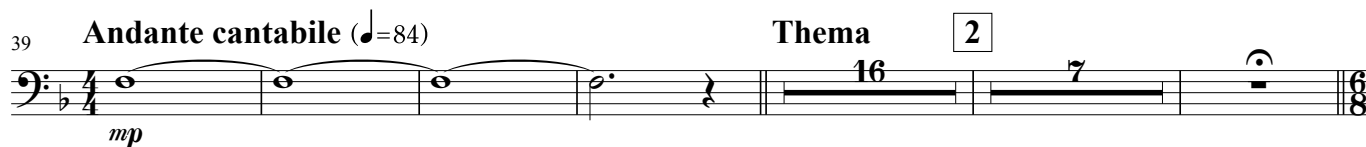
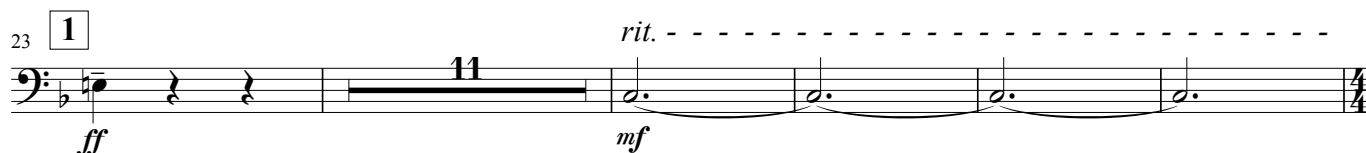
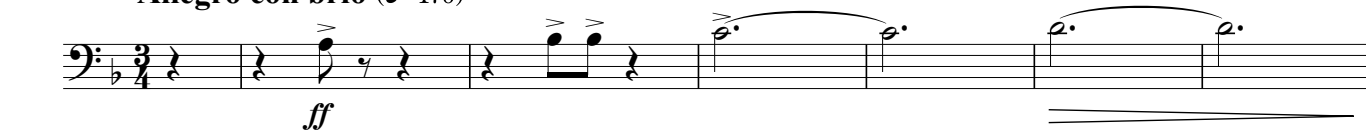


Euphonium in B \flat
(B. C.)

"Home, Sweet Home" Variations
for Wind Orchestra

Chang Su KOH (2006)

Allegro con brio (♩=176)

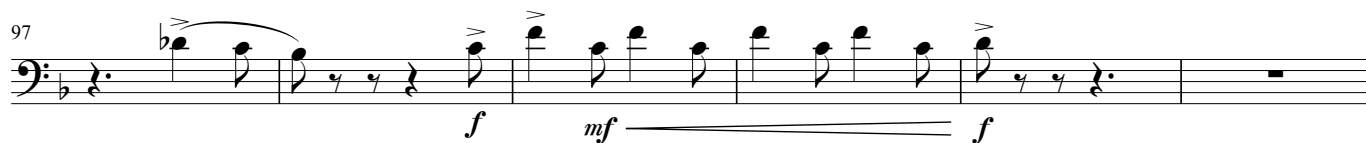


Var. I Moderato giocoso

(♩=60)

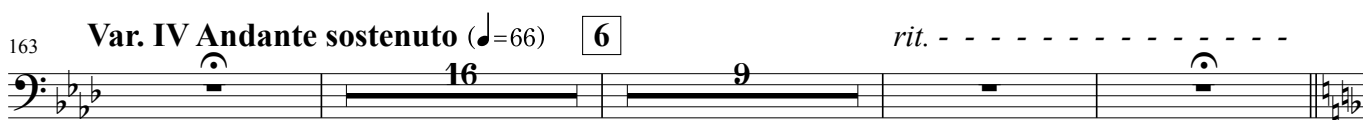
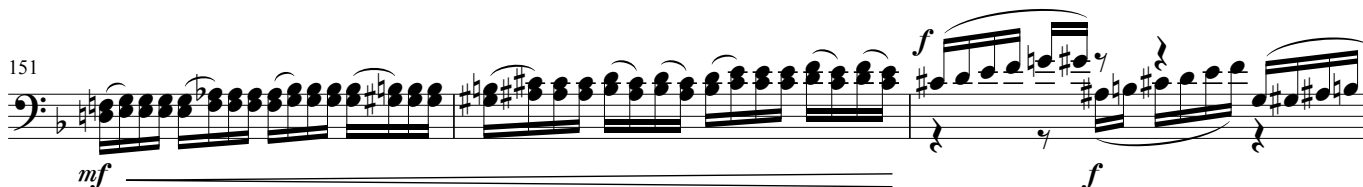
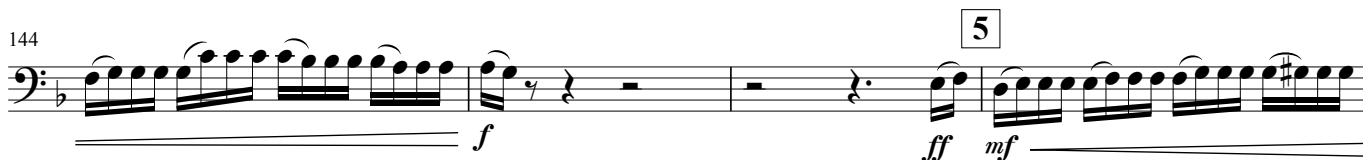
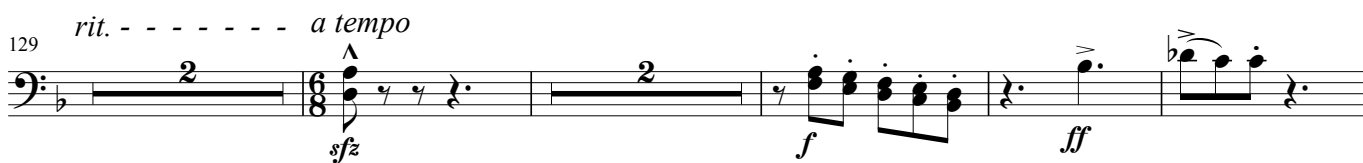


Var. II Vivace scherzando (♩=120)



Euphonium in B^b (B. C.)

molto rit. - - **Ländler**

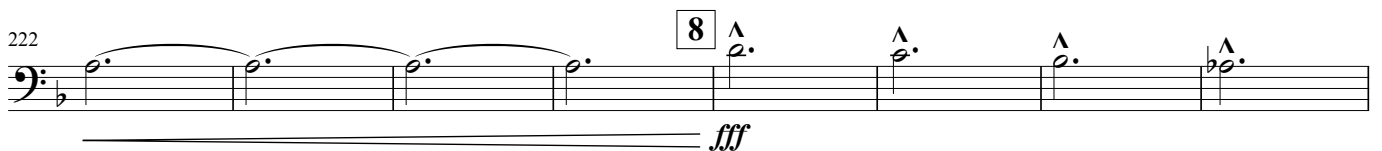
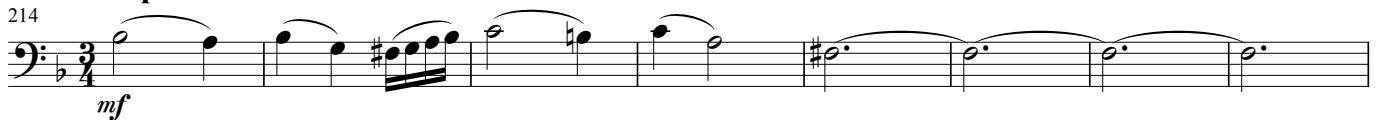


Euphonium in B \flat (B. C.)

191 **Var. V Allegro con brio** ($\text{♩}=120$)



214 **Tempo I** ($\text{♩}=176$)



238 **Andante cantabile** ($\text{♩}=84$)

poco allarg.

Adagio ($\text{♩}=60$)

